

# **RayWhite®**

TOUMA TAYLOR

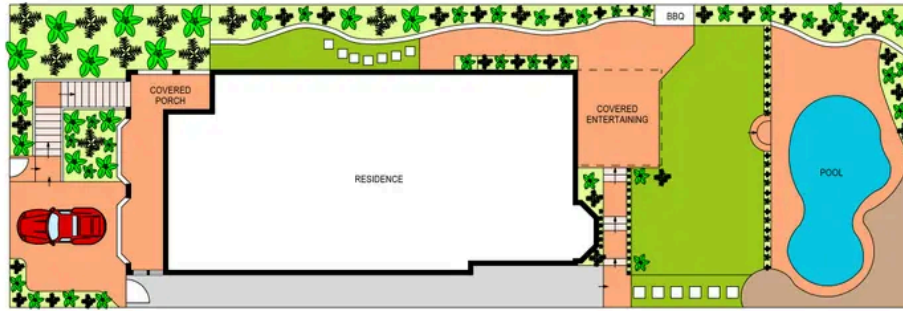


**Enviably Family Haven in Peaceful Cul-De-Sac**

1 Inglethorpe Avenue, Kensington

5 bed 3 bath 2 car

**Sold**



SITE PLAN  
(NOT TO SCALE)



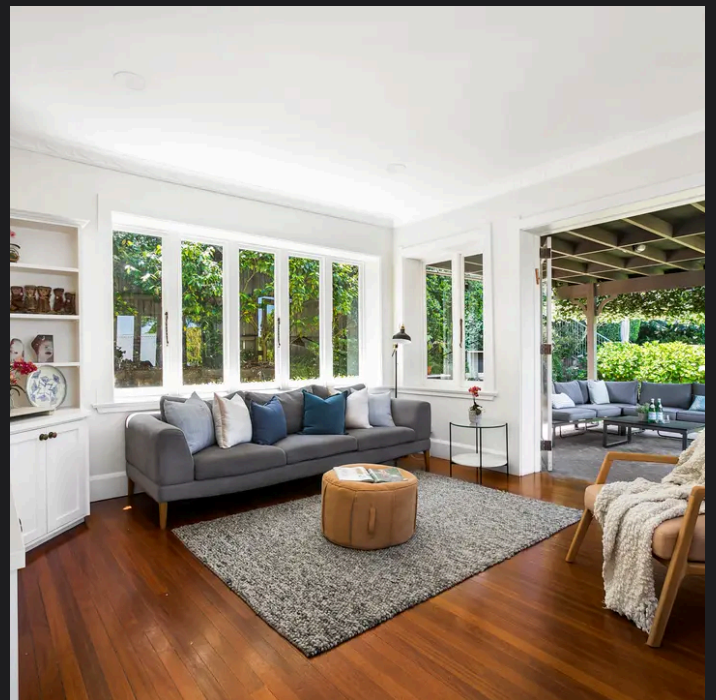
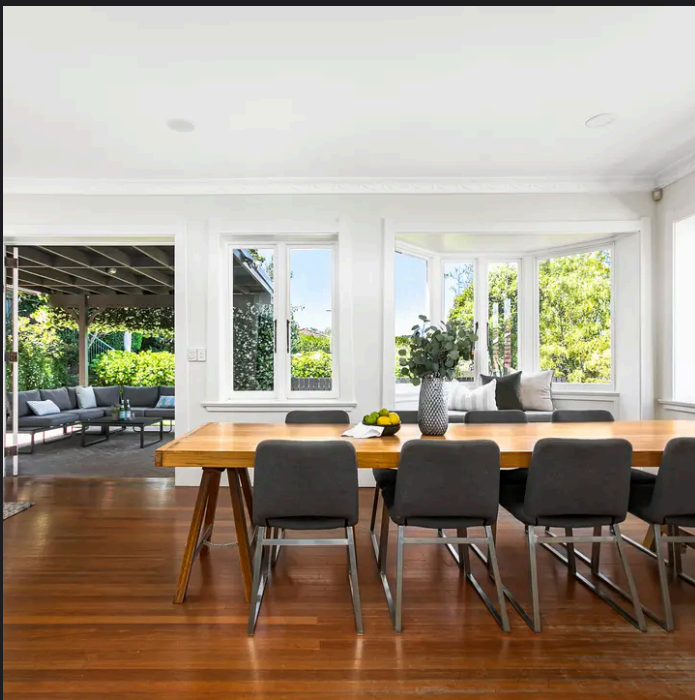
SCALE (METRES)

PLANS SHOWN ONLY INDICATIVE OF LAYOUT. DIMENSIONS ARE APPROXIMATE.  
Ref. No: 100613



1 INGLETHORPE AVENUE

KENSINGTON



**Roger Wardy 0481 355 493**  
roger.wardy@raywhite.com

**Disclaimer:** All information provided is sourced from what we believe to be reliable sources. However, we do not guarantee its accuracy, and interested parties should conduct their own enquiries. Scale in metres. Indicative only. Dimensions are approximate.