

# RayWhite®

TOUMA TAYLOR

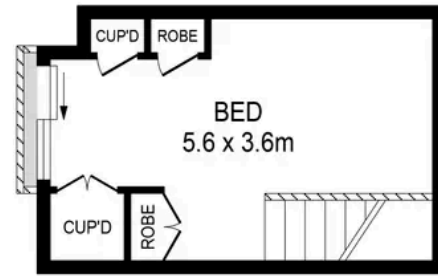


**Historical c1840 sandstone cottage in  
award-winning laneway**

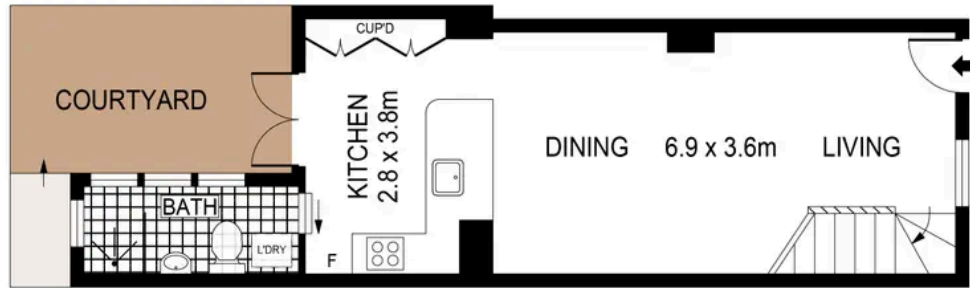
10 McElhone Place, Surry Hills

1 bed 1 bath

**Sold**



LEVEL ONE



ENTRY LEVEL



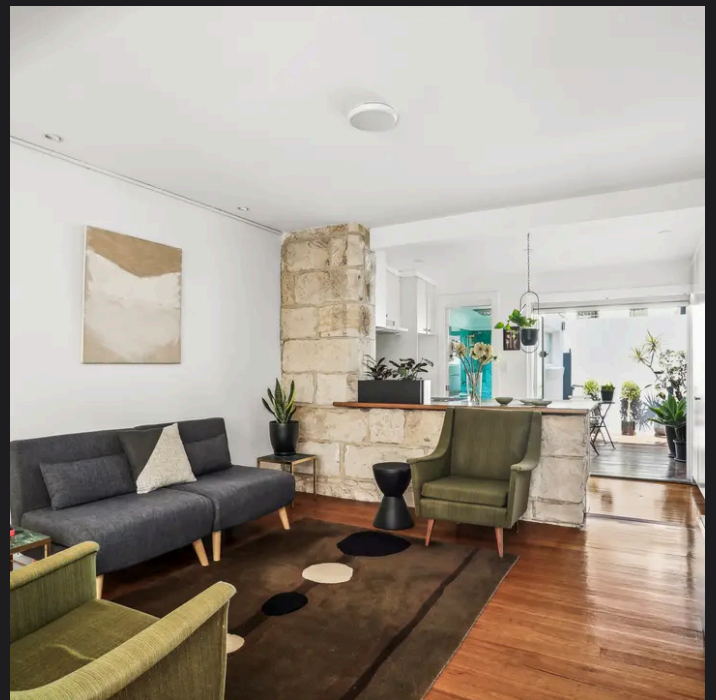
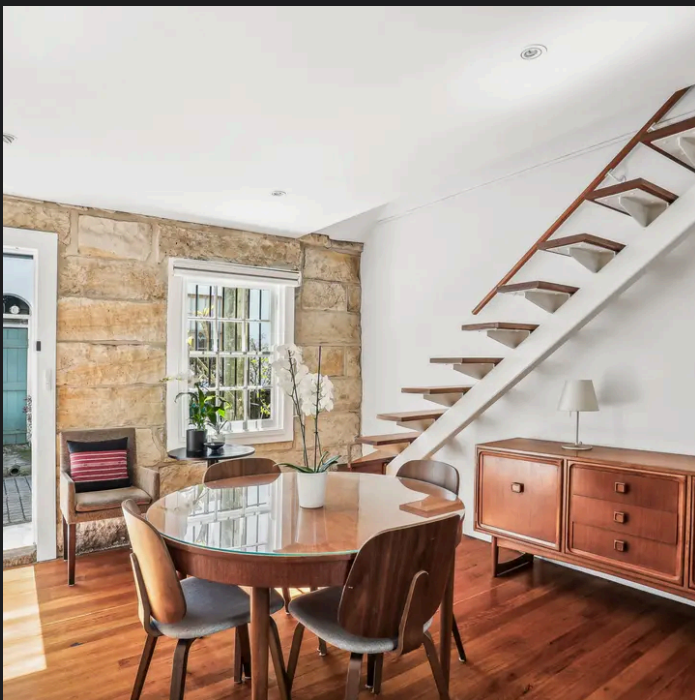
PLANS SHOWN ONLY INDICATIVE OF LAYOUT. DIMENSIONS ARE APPROXIMATE.  
Ref. No: 01705

APPROX. INTERNAL AREA : 60m<sup>2</sup>  
APPROX. EXTERNAL AREA : 12m<sup>2</sup>



10 MCELHONE PLACE

SURRY HILLS



Con Fotaras 0411 648 458  
con.fotaras@raywhite.com

**Disclaimer:** All information provided is sourced from what we believe to be reliable sources. However, we do not guarantee its accuracy, and interested parties should conduct their own enquiries. Scale in metres. Indicative only. Dimensions are approximate.