

RayWhite®

TOUMA TAYLOR

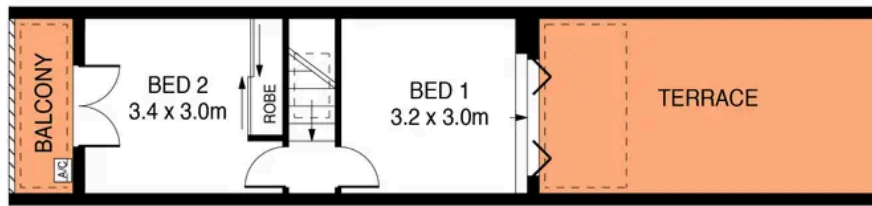


**Idyllic lifestyle retreat with sunlit alfresco
entertaining**

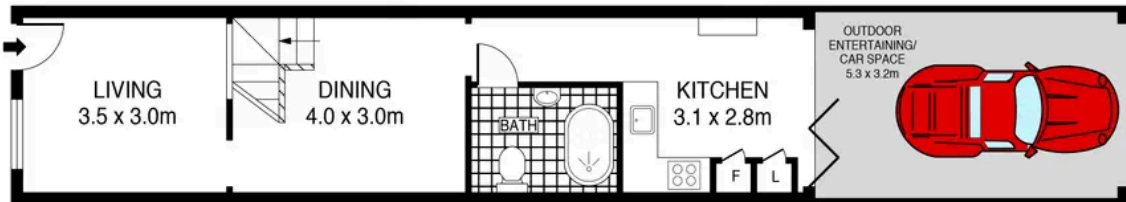
10 Mount Street, Redfern

2 bed 1 bath 1 car

Sold



FIRST FLOOR



GROUND FLOOR



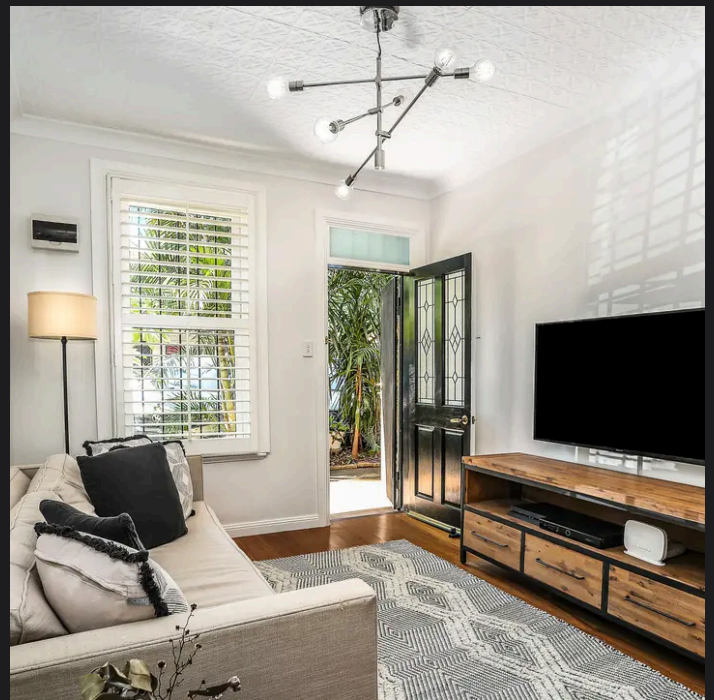
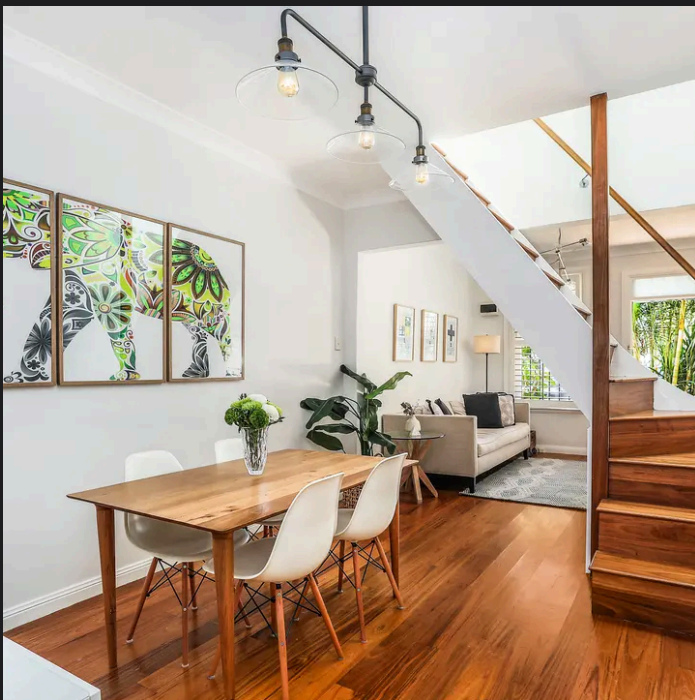
PLANS SHOWN ONLY INDICATIVE OF LAYOUT. DIMENSIONS ARE APPROXIMATE.
Ref. No: 88589

USEABLE SPACE : 108.2m²



10 MOUNT STREET

REDFERN



Charles Tuma 0425 305 455
charles.tuma@raywhite.com

Hayden Richards 0414 872 784
hayden.richards@raywhite.com

Disclaimer: All information provided is sourced from what we believe to be reliable sources. However, we do not guarantee its accuracy, and interested parties should conduct their own enquiries. Scale in metres. Indicative only. Dimensions are approximate.