

RayWhite®

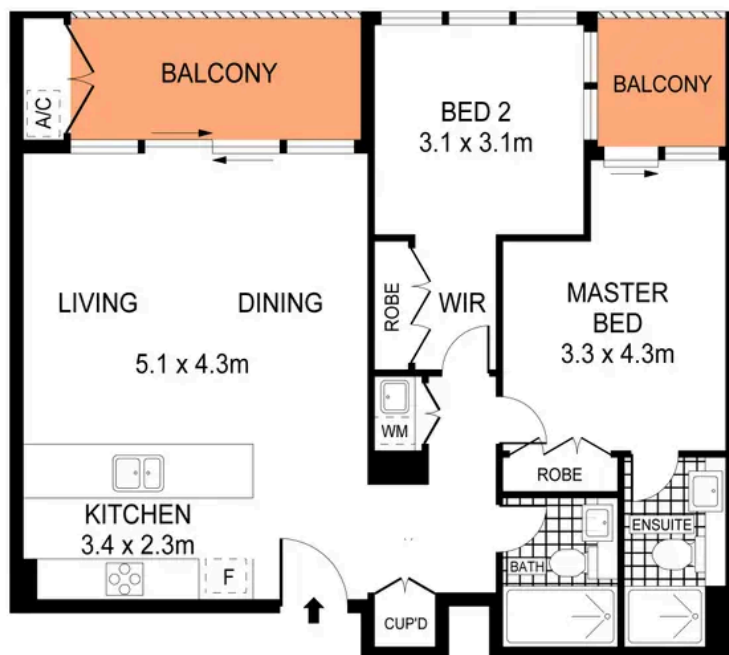
TOUMA TAYLOR



**Sophisticated executive living in 'The
Castlereagh'**

1001/209 Castlereagh St, Sydney

2 bed 2 bath



LEVEL TEN



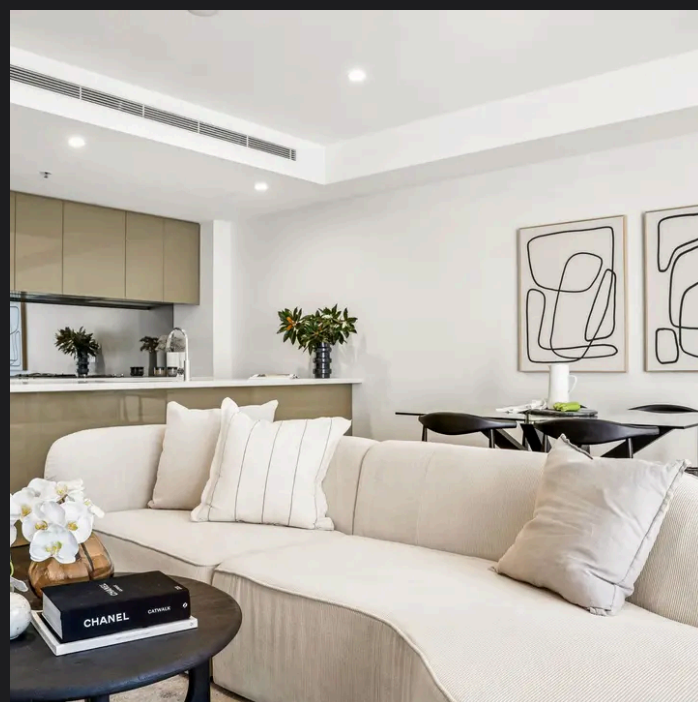
PLANS SHOWN ONLY INDICATIVE OF LAYOUT. DIMENSIONS ARE APPROXIMATE.
Ref. No. 04421

APPROX. INTERNAL AREA : 78m²
APPROX. EXTERNAL AREA : 12m²



1001/209 CASTLEREAGH STREET

SYDNEY



Walter Burfitt-Williams 0402 833 566
walter.bw@raywhite.com

Dalton Stewart 0458 668 119
dalton.stewart@raywhite.com

Disclaimer: All information provided is sourced from what we believe to be reliable sources. However, we do not guarantee its accuracy, and interested parties should conduct their own enquiries. Scale in metres. Indicative only. Dimensions are approximate.