

RayWhite®

TOUMA TAYLOR



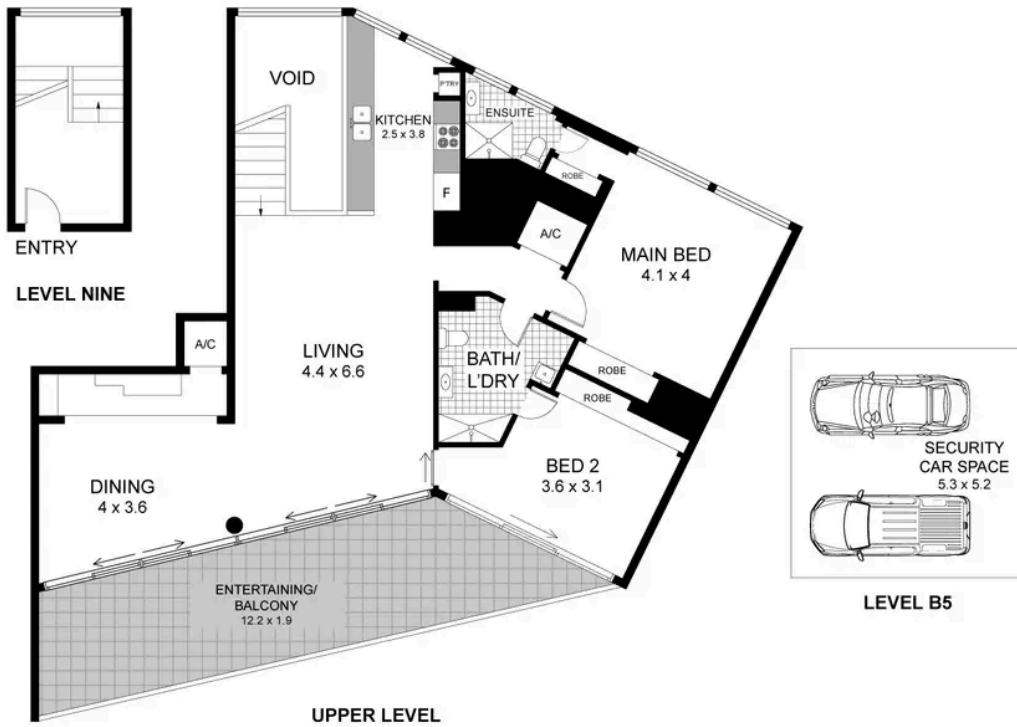
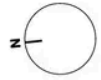
'St Margaret's' penthouse with wraparound views

1001/425 Bourke Street, Surry Hills

2 bed 2 bath 2 car

Sold

0 1 2 3 4



1001/425 BOURKE STREET
SURRY HILLS

2 Bedroom, 2 Bath, 2 Car

Total area including balcony
(approx.) 140sqm



PLEASE NOTE: WHILST RAY WHITE TAKES EVERY CARE IN THE PURSUIT OF ACCURACY, THE PLAN IS SHOWN FOR GENERAL GUIDANCE ONLY. ALL AREAS, MEASUREMENTS AND DISTANCES ARE APPROXIMATE AND NOT TO SCALE. RAY WHITE AND OUR VENDOR WILL ACCEPT NO RESPONSIBILITY FOR ITS ACCURACY. INTERESTED PARTIES ARE ADVISED TO MAKE THEIR OWN INDEPENDENT ENQUIRIES



Charles Tuma 0425 305 455
charles.tuma@raywhite.com

Max Klimenko 0425 336 555
max.klimenko@raywhite.com

Disclaimer: All information provided is sourced from what we believe to be reliable sources. However, we do not guarantee its accuracy, and interested parties should conduct their own enquiries. Scale in metres. Indicative only. Dimensions are approximate.