

RayWhite[®]

TOUMA TAYLOR

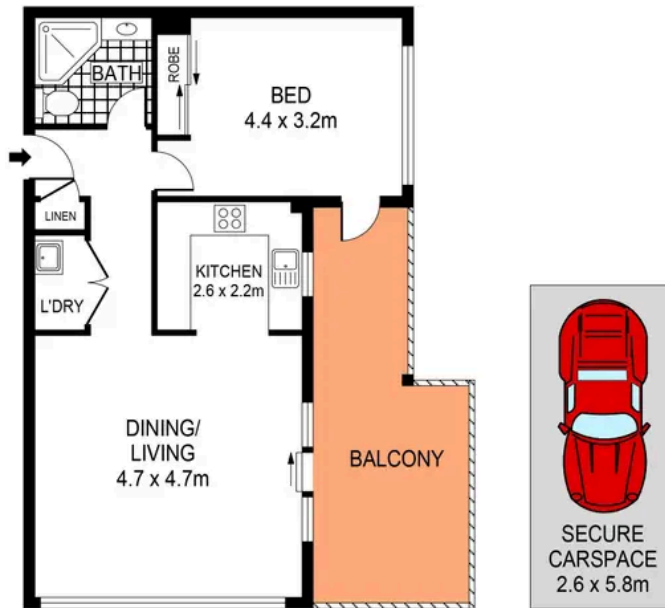


**Oversized Inner-City Haven with Parking in
Boutique Complex**

10/424 Elizabeth Street, Surry Hills

1 bed 1 bath 1 car

Sold



LEVEL FOUR



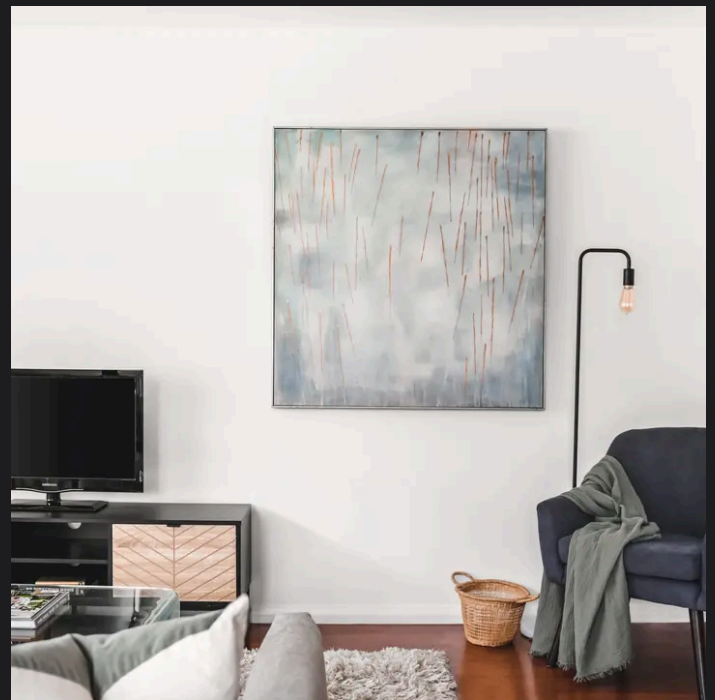
PLANS SHOWN ONLY INDICATIVE OF LAYOUT. DIMENSIONS ARE APPROXIMATE.
Ref. No: 102483

APPROX. TOTAL SPACE: 87m²



10/424 ELIZABETH STREET

SURRY HILLS



Hayden Richards 0414 872 784
hayden.richards@raywhite.com

Disclaimer: All information provided is sourced from what we believe to be reliable sources. However, we do not guarantee its accuracy, and interested parties should conduct their own enquiries. Scale in metres. Indicative only. Dimensions are approximate.