

RayWhite®

TOUMA TAYLOR

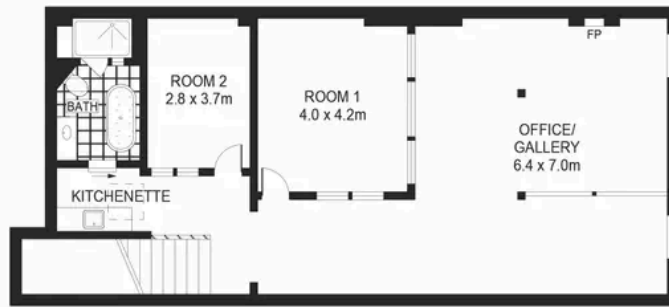


**Premium Commercial Property with
Superb Visibility - B2 Zoning**

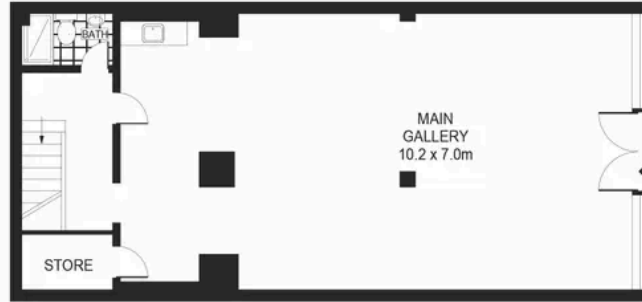
107-109 Regent Street, Redfern

2 bed 2 bath

Sold



FIRST FLOOR



GROUND FLOOR



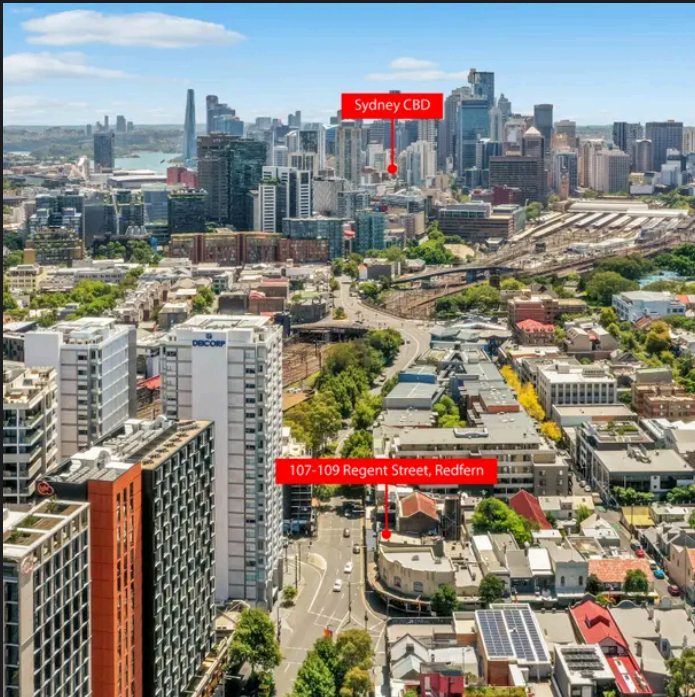
SCALE (METRES)

PLANS SHOWN ONLY INDICATIVE OF LAYOUT. DIMENSIONS ARE APPROXIMATE.
Ref. No: 101737



107-109 REGENT STREET

REDFERN



Charles Touma 0425 305 455
charles.touma@raywhite.com

Con Fotaras 0411 648 458
con.fotaras@raywhite.com

Disclaimer: All information provided is sourced from what we believe to be reliable sources. However, we do not guarantee its accuracy, and interested parties should conduct their own enquiries. Scale in metres. Indicative only. Dimensions are approximate.