

RayWhite®

TOUMA TAYLOR



**Sublime architectural terrace of designer
style & quality**

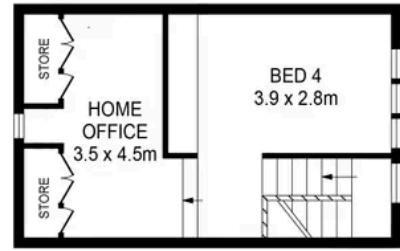
107 Baptist Street, Redfern

4 bed 2 bath 1 car

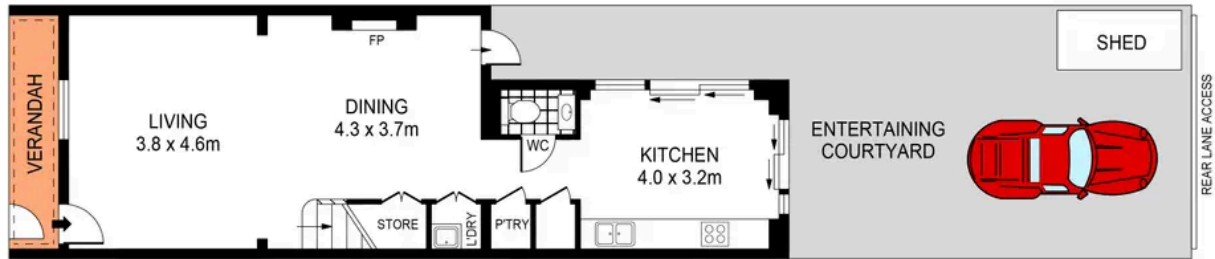
Sold



LEVEL ONE



LEVEL TWO



GROUND LEVEL



SCALE (METRES)

PLANS SHOWN ONLY INDICATIVE OF LAYOUT. DIMENSIONS ARE APPROXIMATE.
Ref. No: 90600



INT : 147m²



107 BAPTIST STREET

REDFERN



Charles Touma 0425 305 455
charles.touma@raywhite.com

Cadan Hickey 0404 206 240
cadan_hickey@raywhite.com

Disclaimer: All information provided is sourced from what we believe to be reliable sources. However, we do not guarantee its accuracy, and interested parties should conduct their own enquiries. Scale in metres. Indicative only. Dimensions are approximate.