

RayWhite®

TOUMA TAYLOR

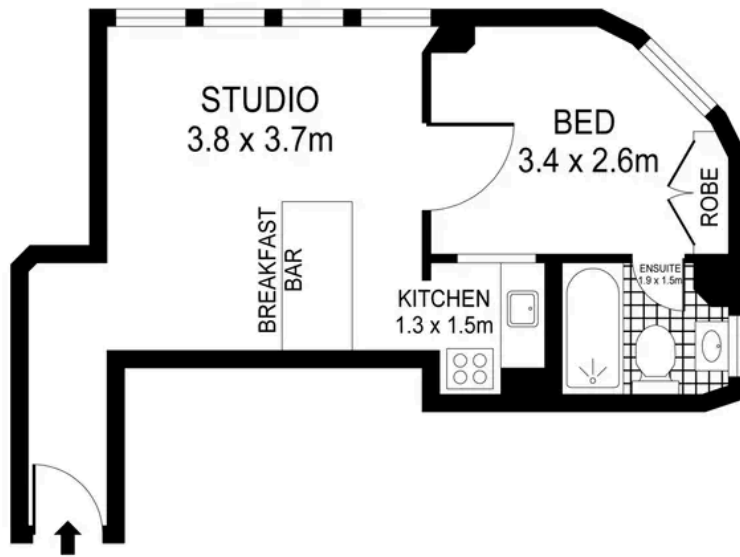


Sunny corner apartment in iconic Belgenny

107/389 Bourke Street, Surry Hills

1 bed 1 bath

Sold



PLANS SHOWN ONLY INDICATIVE OF LAYOUT. DIMENSIONS ARE APPROXIMATE.
Ref. No. 01177

APPROX. INTERNAL AREA : 30m²



107/389-393 BOURKE STREET

SURRY HILLS



Dalton Stewart 0458 668 119
dalton.stewart@raywhite.com

Walter Burfitt-Williams 0402 833 566
walter.bw@raywhite.com

Disclaimer: All information provided is sourced from what we believe to be reliable sources. However, we do not guarantee its accuracy, and interested parties should conduct their own enquiries. Scale in metres. Indicative only. Dimensions are approximate.