

RayWhite®

TOUMA TAYLOR



**North Facing Contemporary One Bedroom
+ Study Abode In Ultra-Central Locale**

10/8-12 Ascot Street, Kensington

1 bed 1 bath 2 car

Sold



0 1 2 3 4
SCALE (METRES)

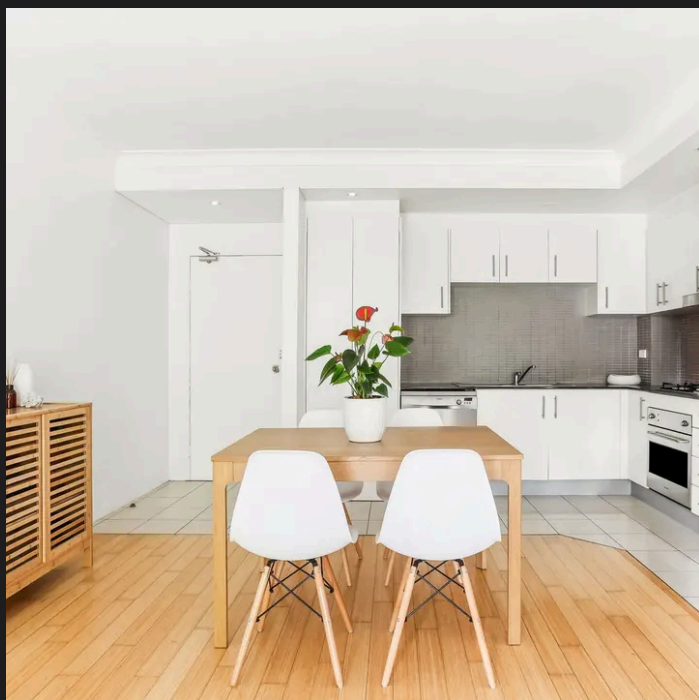
PLANS SHOWN ONLY INDICATIVE OF LAYOUT. DIMENSIONS ARE APPROXIMATE.
Ref. No: 04021

TOTAL LOT SIZE : 87m²



10/8-12 ASCOT STREET

KENSINGTON



Roger Wardy 0481 355 493
roger.wardy@raywhite.com

Jesse Petersen 0404197940
jesse.petersen@raywhite.com

Disclaimer: All information provided is sourced from what we believe to be reliable sources. However, we do not guarantee its accuracy, and interested parties should conduct their own enquiries. Scale in metres. Indicative only. Dimensions are approximate.