

RayWhite®

TOUMA TAYLOR

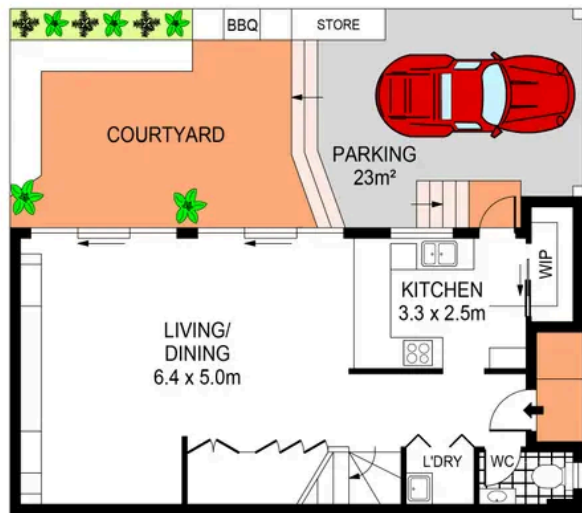


**Luxury North-Facing Courtyard Home in
Laneway Setting**

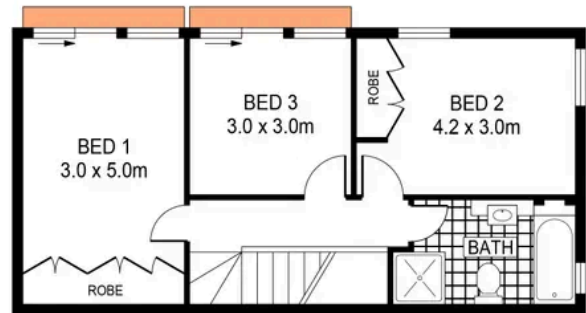
11 Centre Street, Redfern

3 bed 1 bath 1 car

Sold



LEVEL ONE



LEVEL TWO



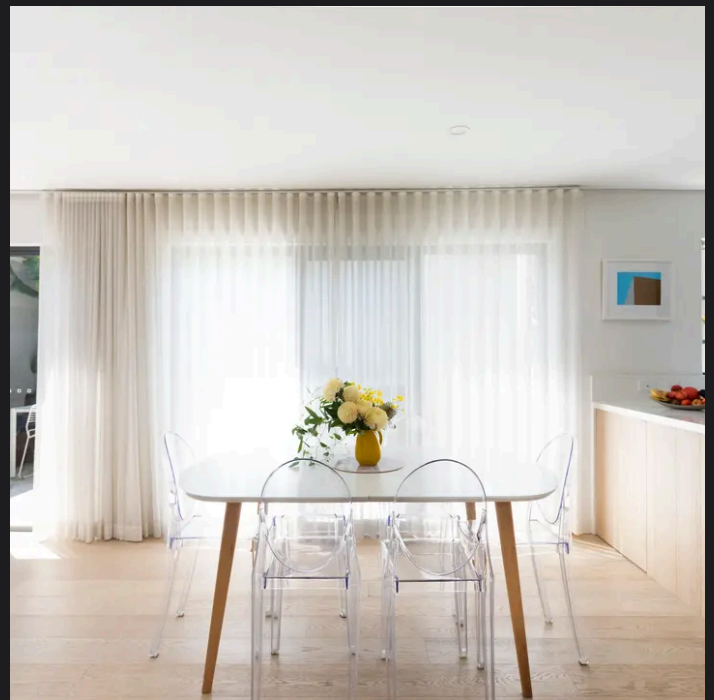
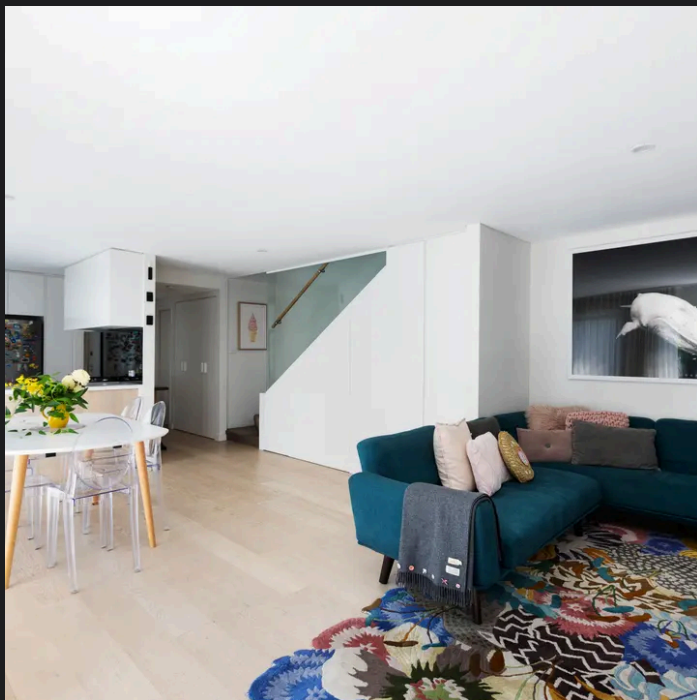
PLANS SHOWN ONLY INDICATIVE OF LAYOUT. DIMENSIONS ARE APPROXIMATE.
Ref. No: 105589



APPROX. INTERNAL AREA : 100m²
APPROX. EXTERNAL AREA : 50m²

11 CENTRE STREET

REDFERN



Charles Touma 0425 305 455
charles.touma@raywhite.com

Cadan Hickey 0404 206 240
cadan_hickey@raywhite.com

Disclaimer: All information provided is sourced from what we believe to be reliable sources. However, we do not guarantee its accuracy, and interested parties should conduct their own enquiries. Scale in metres. Indicative only. Dimensions are approximate.