

# **RayWhite®**

TOUMA TAYLOR

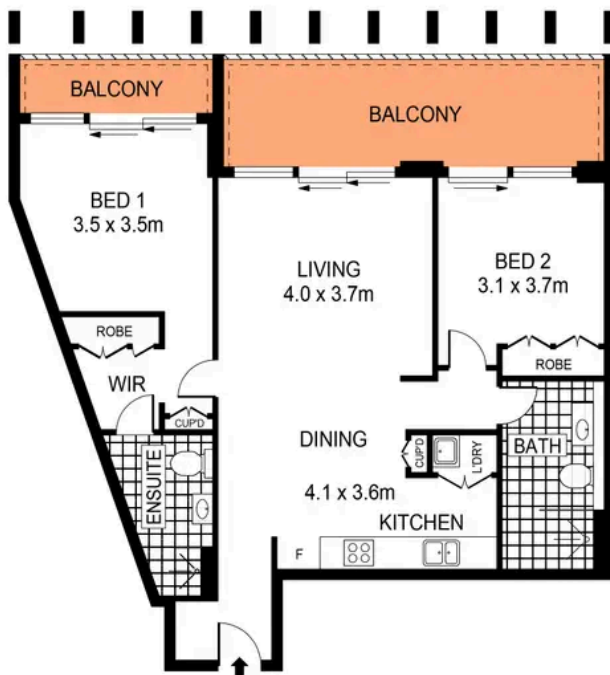


**Brilliant Northerly Apartment with Superior  
Design Instincts**

1101/23 Pelican Street, Surry Hills

2 bed 2 bath 1 car

**Sold**



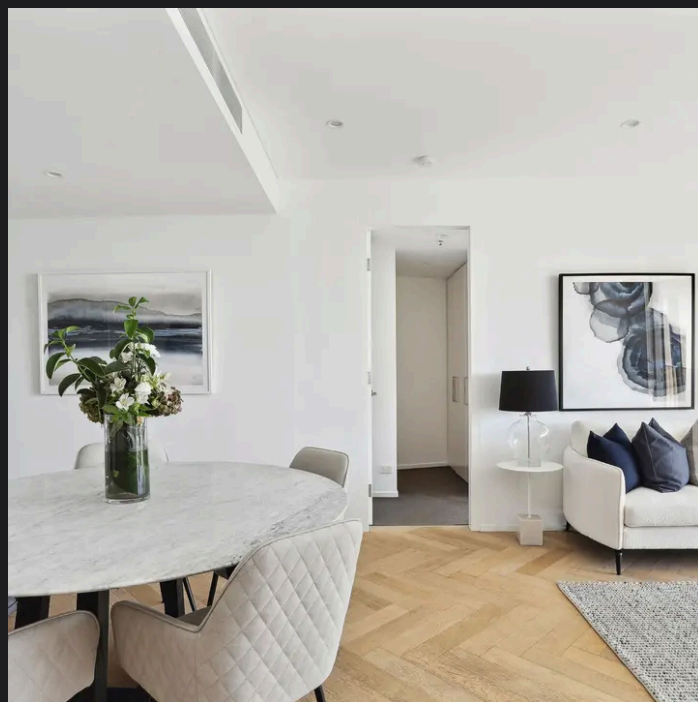
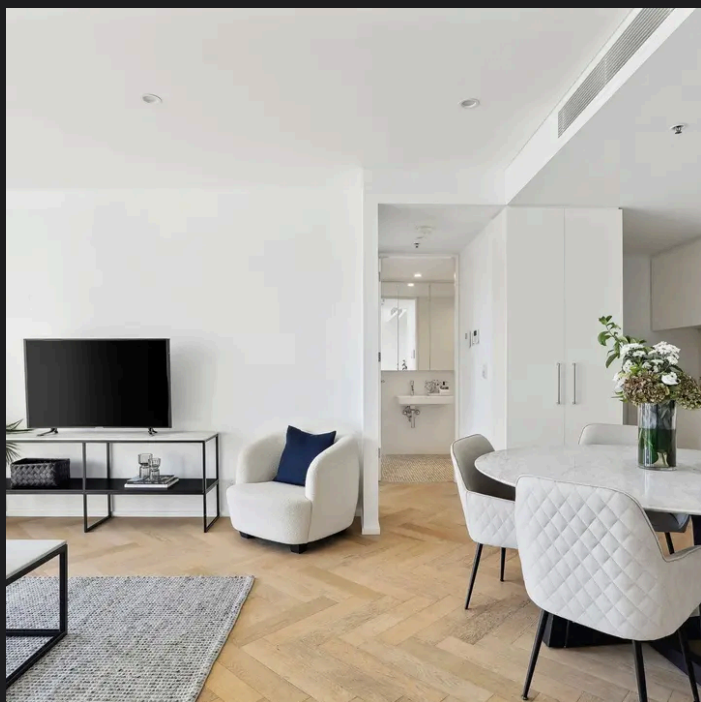
0 1 2 3 4 5  
SCALE (METRES)

PLANS SHOWN ONLY INDICATIVE OF LAYOUT. DIMENSIONS ARE APPROXIMATE.  
Ref. No: 108159



1101/23 PELICAN STREET

SURRY HILLS



**Charles Touma 0425 305 455**  
charles.touma@raywhite.com

**Disclaimer:** All information provided is sourced from what we believe to be reliable sources. However, we do not guarantee its accuracy, and interested parties should conduct their own enquiries. Scale in metres. Indicative only. Dimensions are approximate.