

RayWhite®

TOUMA TAYLOR

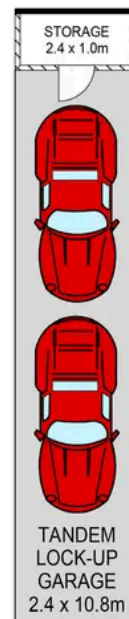
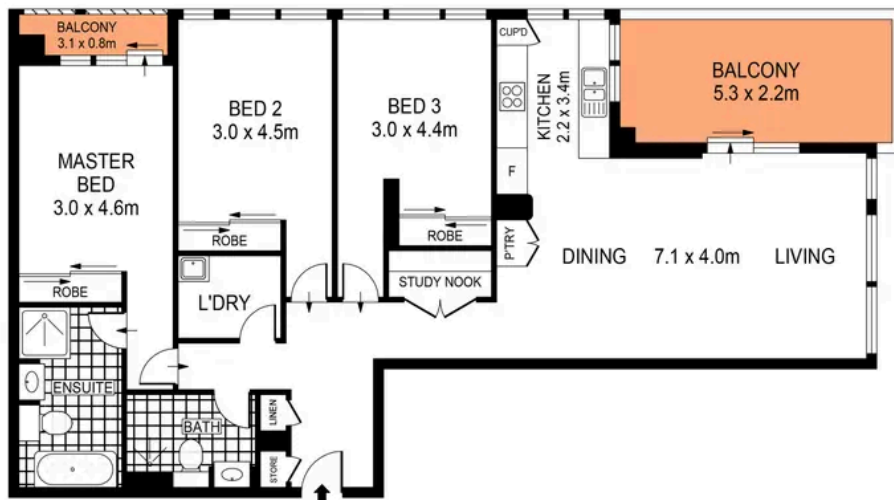


**Breathtaking Sub-Penthouse of Luxury in
the 'Spectrum'**

1101/6 Bourke Street, Mascot

3 bed 2 bath 2 car

Sold

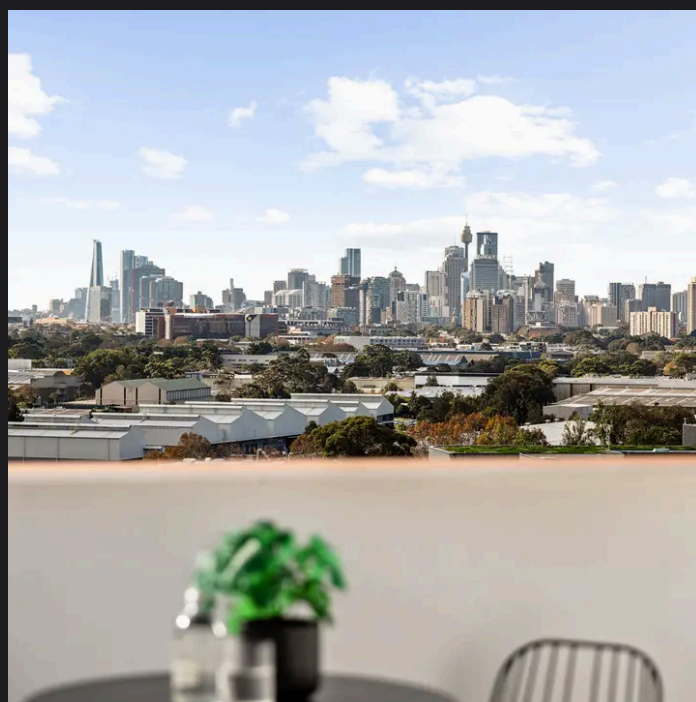
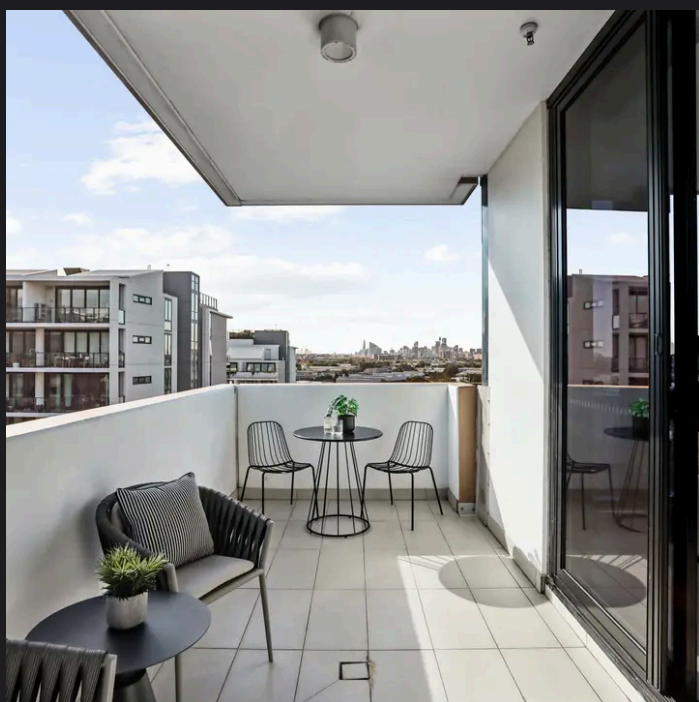


PLANS SHOWN ONLY INDICATIVE OF LAYOUT. DIMENSIONS ARE APPROXIMATE.
Ref. No: 05605



1101/6 BOURKE STREET

MASCOT



Max Klimenko 0425 336 555
max.klimenko@raywhite.com

Dylan Corelli 0458 711 577
dylan.corelli@raywhite.com

Disclaimer: All information provided is sourced from what we believe to be reliable sources. However, we do not guarantee its accuracy, and interested parties should conduct their own enquiries. Scale in metres. Indicative only. Dimensions are approximate.