

RayWhite®

TOUMA TAYLOR

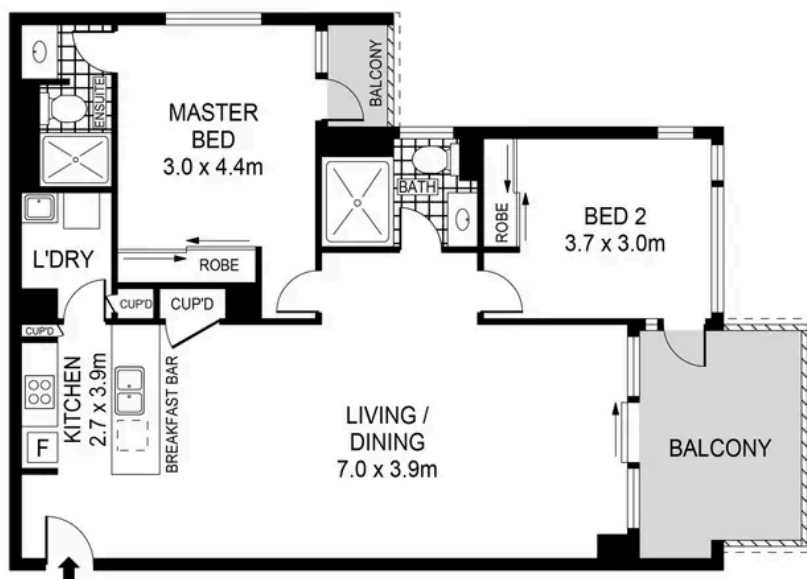
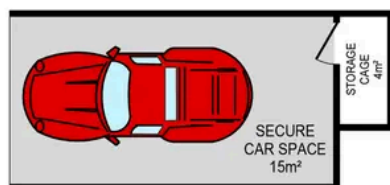


**Stylish Lifestyle Oasis in Boutique
'Spectrum'**

1106/6 Bourke Street, Mascot

2 bed 2 bath 1 car

Sold



LEVEL ELEVEN

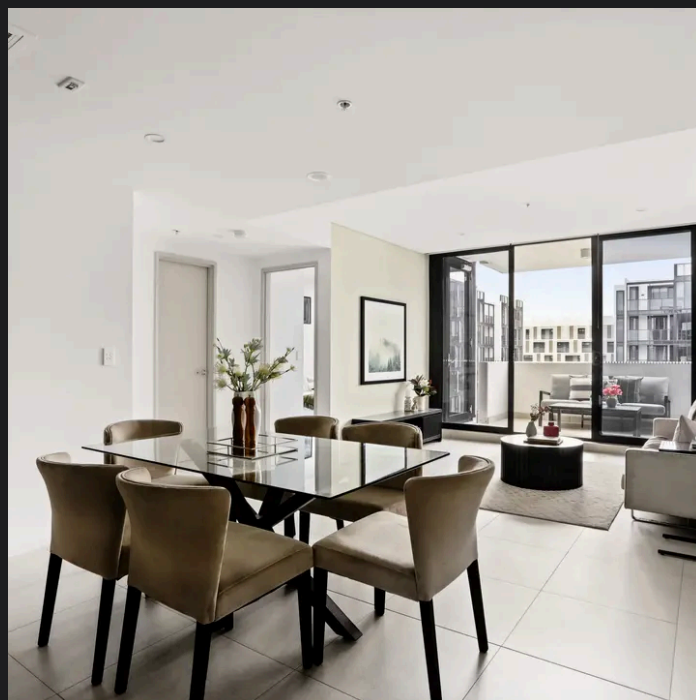
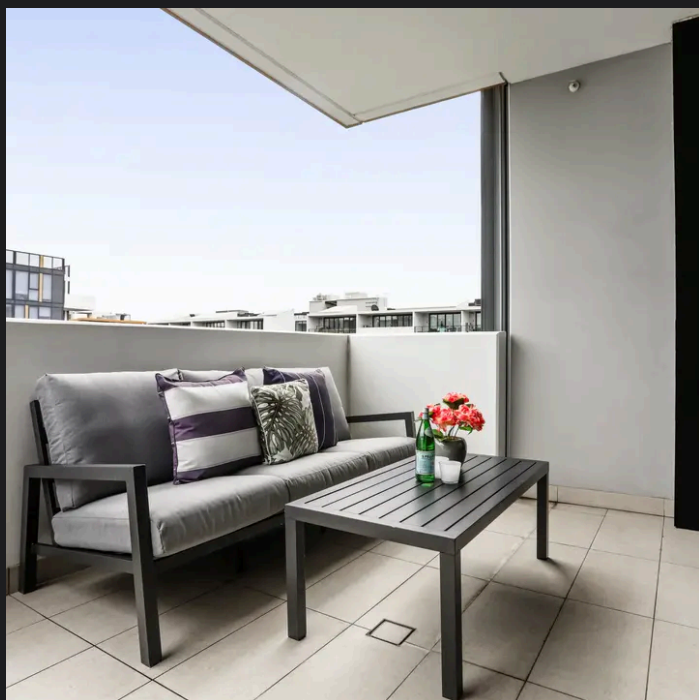
0 1 2 3 4 5 SCALE (METRES)

PLANS SHOWN ONLY INDICATIVE OF LAYOUT. DIMENSIONS ARE APPROXIMATE.
Ref. No. 02077



1106/6 BOURKE STREET

MASCOT



Max Klimenko 0425 336 555
max.klimenko@raywhite.com

Dylan Corelli 0458 711 577
dylan.corelli@raywhite.com

Disclaimer: All information provided is sourced from what we believe to be reliable sources. However, we do not guarantee its accuracy, and interested parties should conduct their own enquiries. Scale in metres. Indicative only. Dimensions are approximate.