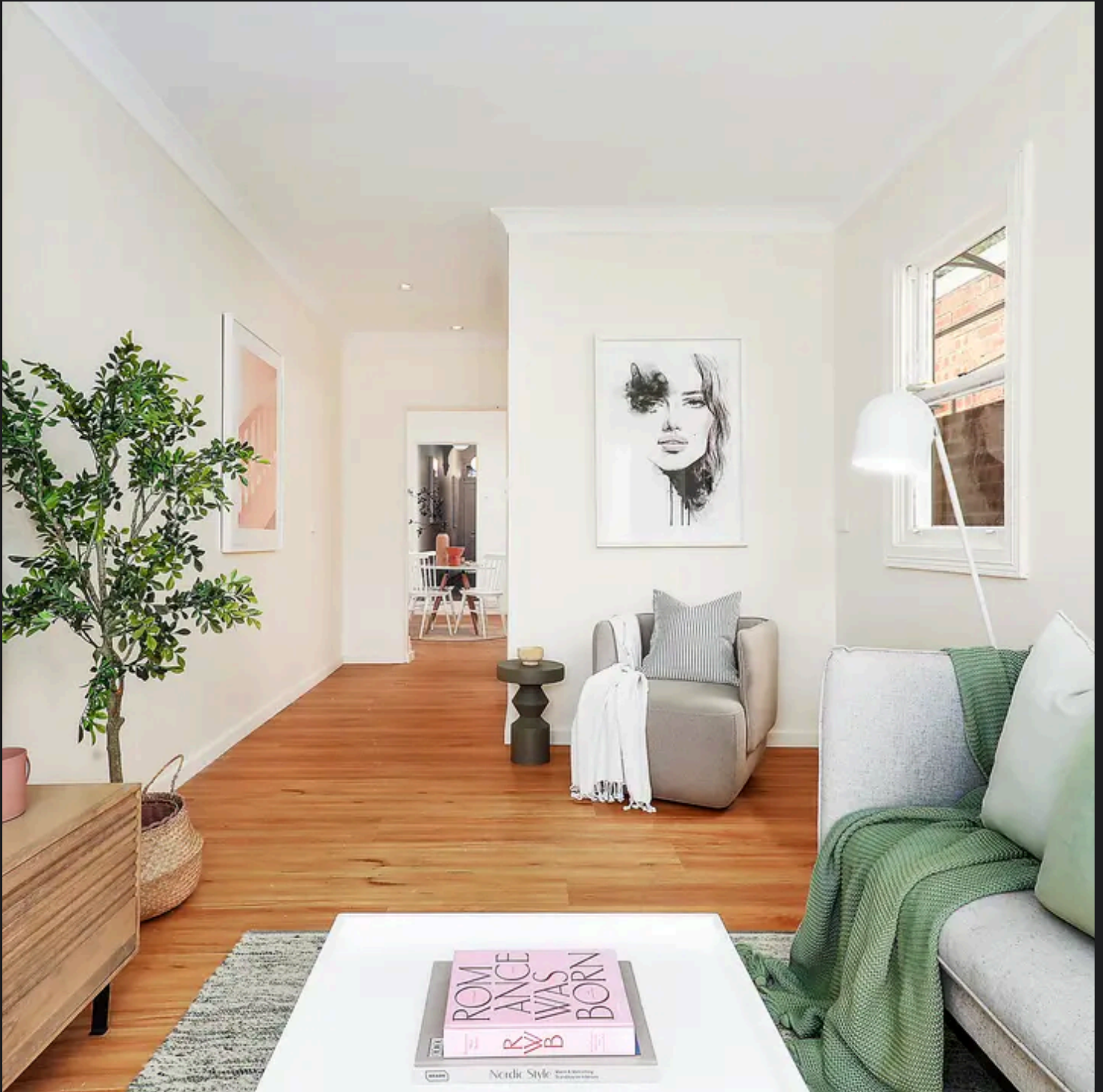


RayWhite®

TOUMA TAYLOR



**Well-presented single level Victorian
terrace with potential**

111 Wilton Street, Surry Hills

2 bed 1 bath

Sold



0 1 2 3 4 5
SCALE (METRES)

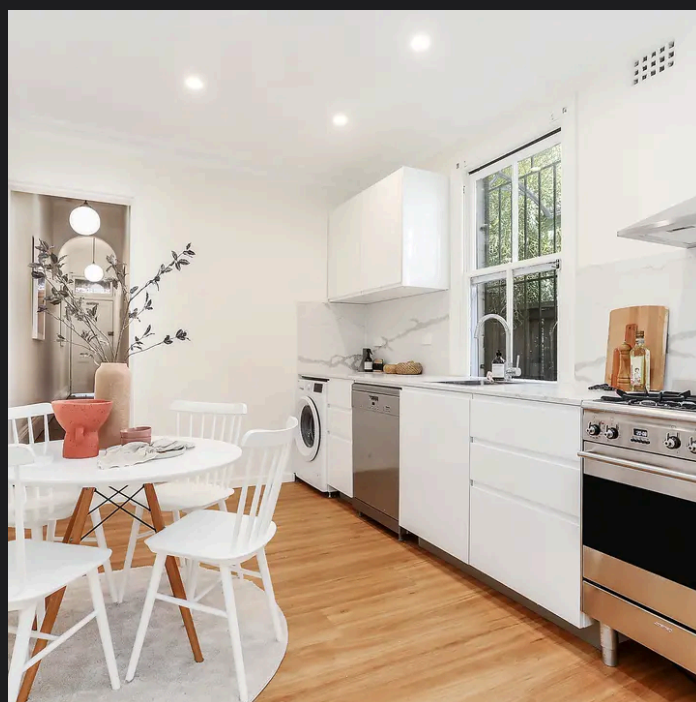
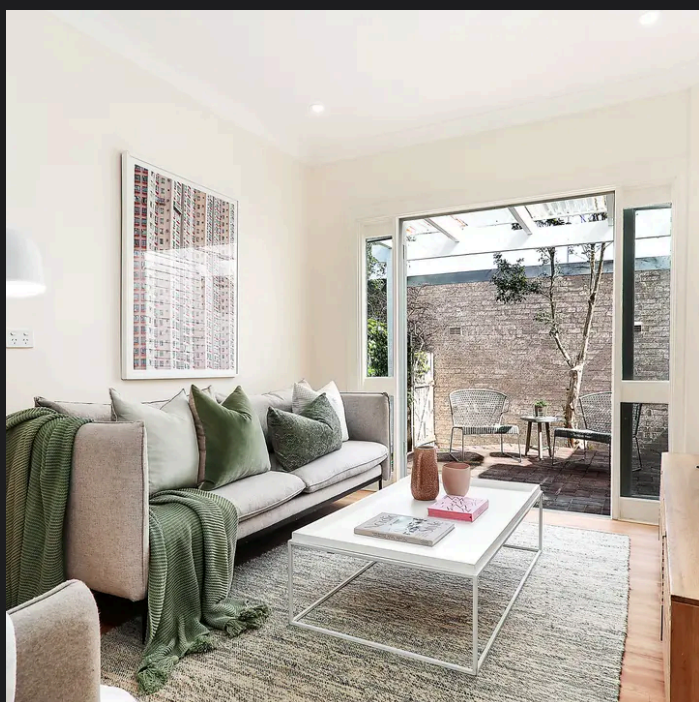
PLANS SHOWN ONLY INDICATIVE OF LAYOUT. DIMENSIONS ARE APPROXIMATE.
Ref. No: 92027



LAND SIZE : 114m²

111 WILTON STREET

SURRY HILLS



Charles Tuma 0425 305 455
charles.tuma@raywhite.com

Hayden Richards 0414 872 784
hayden.richards@raywhite.com

Disclaimer: All information provided is sourced from what we believe to be reliable sources. However, we do not guarantee its accuracy, and interested parties should conduct their own enquiries. Scale in metres. Indicative only. Dimensions are approximate.