

# RayWhite®

TOUMA TAYLOR

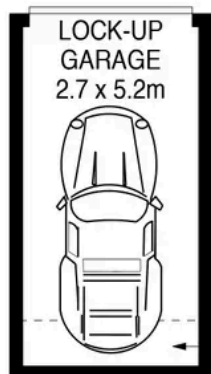


**Brilliant North-Facing Apartment with  
103.7sqm On Title**

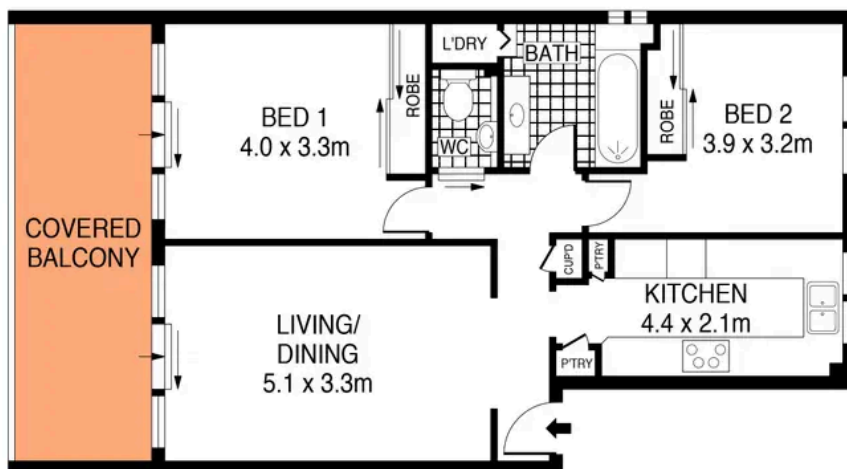
11/13-19 Glen Street, Bondi

2 bed 1 bath 1 car

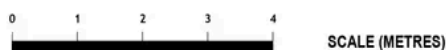
**Sold**



**GROUND LEVEL**



**LEVEL ONE**



PLANS SHOWN ONLY INDICATIVE OF LAYOUT. DIMENSIONS ARE APPROXIMATE.  
Ref. No. 89102



**11/13-19 GLEN STREET**

**BONDI**



**Con Fotaras 0411 648 458**  
[con.fotaras@raywhite.com](mailto:con.fotaras@raywhite.com)

**Disclaimer:** All information provided is sourced from what we believe to be reliable sources. However, we do not guarantee its accuracy, and interested parties should conduct their own enquiries. Scale in metres. Indicative only. Dimensions are approximate.