

RayWhite®

TOUMA TAYLOR

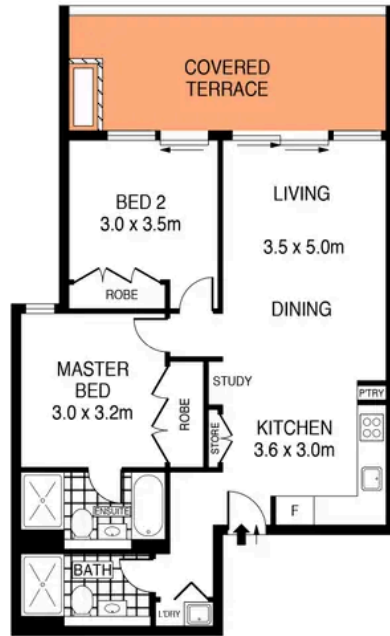


**Luxury Near-New Lifestyle Sanctuary In
'The Treehouse'**

111/63-85 Victoria Street, Beaconsfield

2 bed 2 bath 1 car

Sold



LEVEL ONE



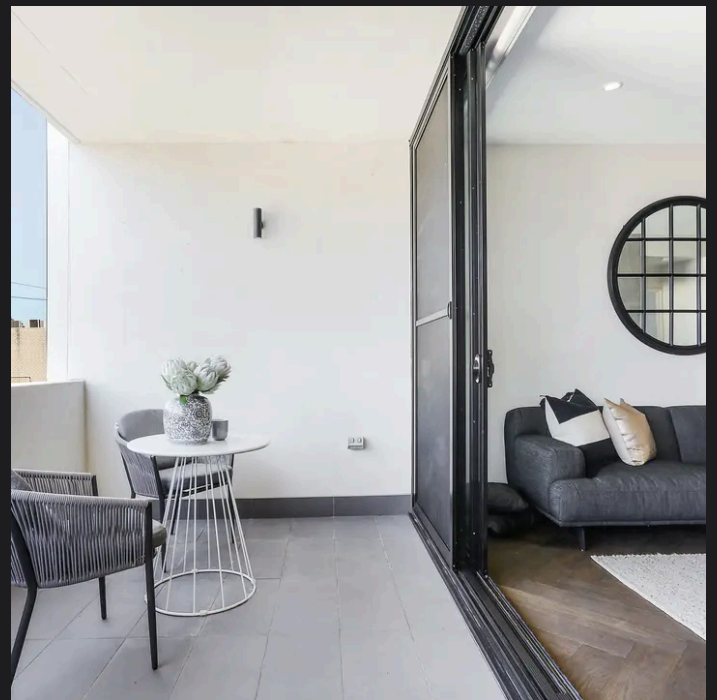
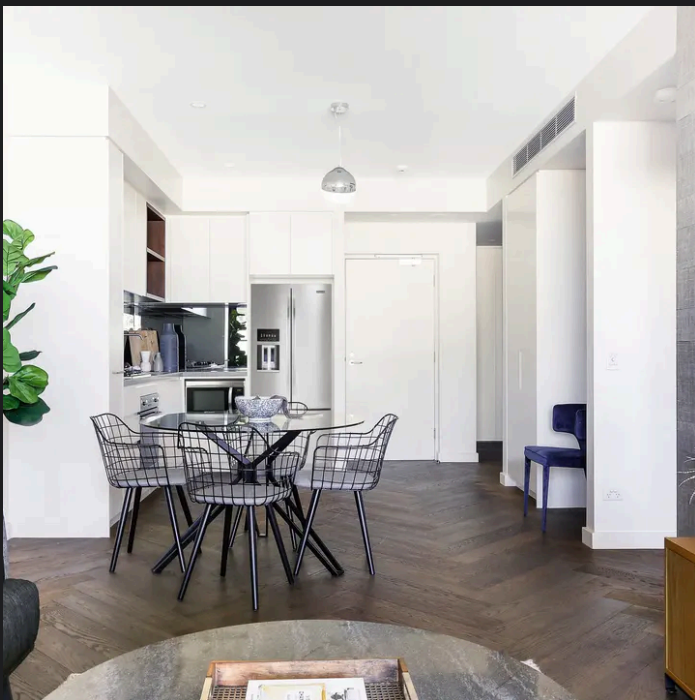
BASEMENT



PLANS SHOWN ONLY INDICATIVE OF LAYOUT. DIMENSIONS ARE APPROXIMATE.
Ref. No: 90408

111/63-85 VICTORIA STREET

BEACONSFIELD



Con Fotaras 0411 648 458
con.fotaras@raywhite.com

Disclaimer: All information provided is sourced from what we believe to be reliable sources. However, we do not guarantee its accuracy, and interested parties should conduct their own enquiries. Scale in metres. Indicative only. Dimensions are approximate.