

RayWhite®

TOUMA TAYLOR



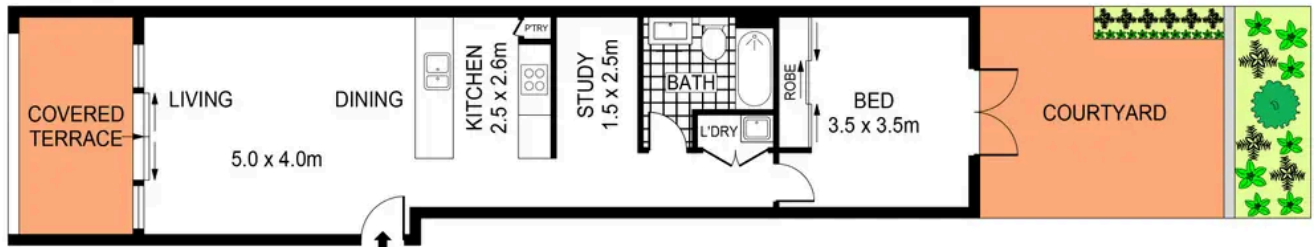
**Idyllic Lifestyle Retreat In A Walk-To-
Everywhere Address**

1/12 Garden Street, Alexandria

1 bed 1 bath

Sold

STORAGE CAGE - 2sqm



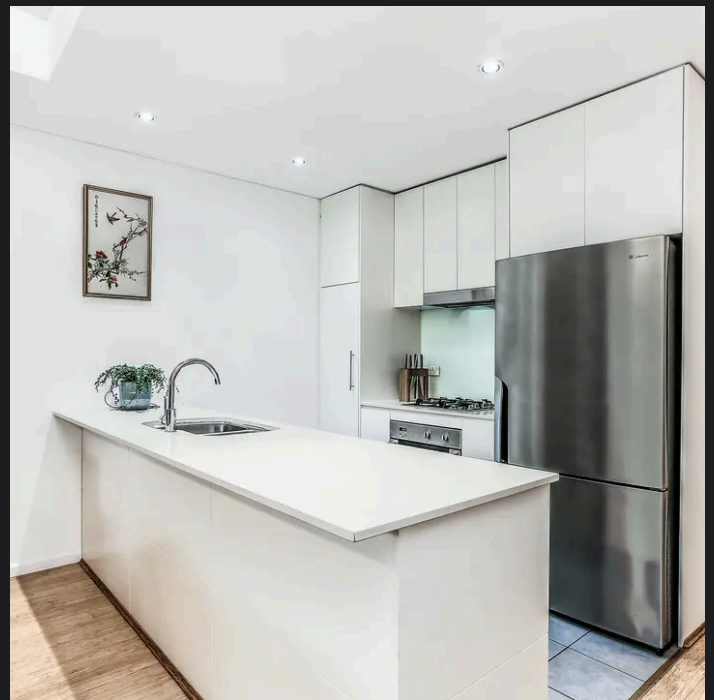
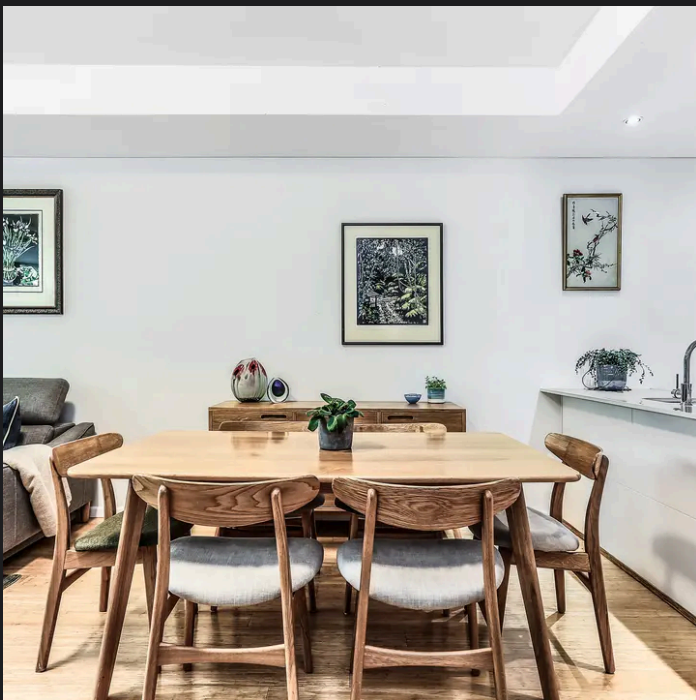
0 1 2 3 4 5 SCALE (METRES)

PLANS SHOWN ONLY INDICATIVE OF LAYOUT. DIMENSIONS ARE APPROXIMATE.
Ref. No: 85445



1/12 GARDEN STREET

ALAXANDRIA



Max Klimenko 0425 336 555
max.klimenko@raywhite.com

Charles Touma 0425 305 455
charles.touma@raywhite.com

Disclaimer: All information provided is sourced from what we believe to be reliable sources. However, we do not guarantee its accuracy, and interested parties should conduct their own enquiries. Scale in metres. Indicative only. Dimensions are approximate.