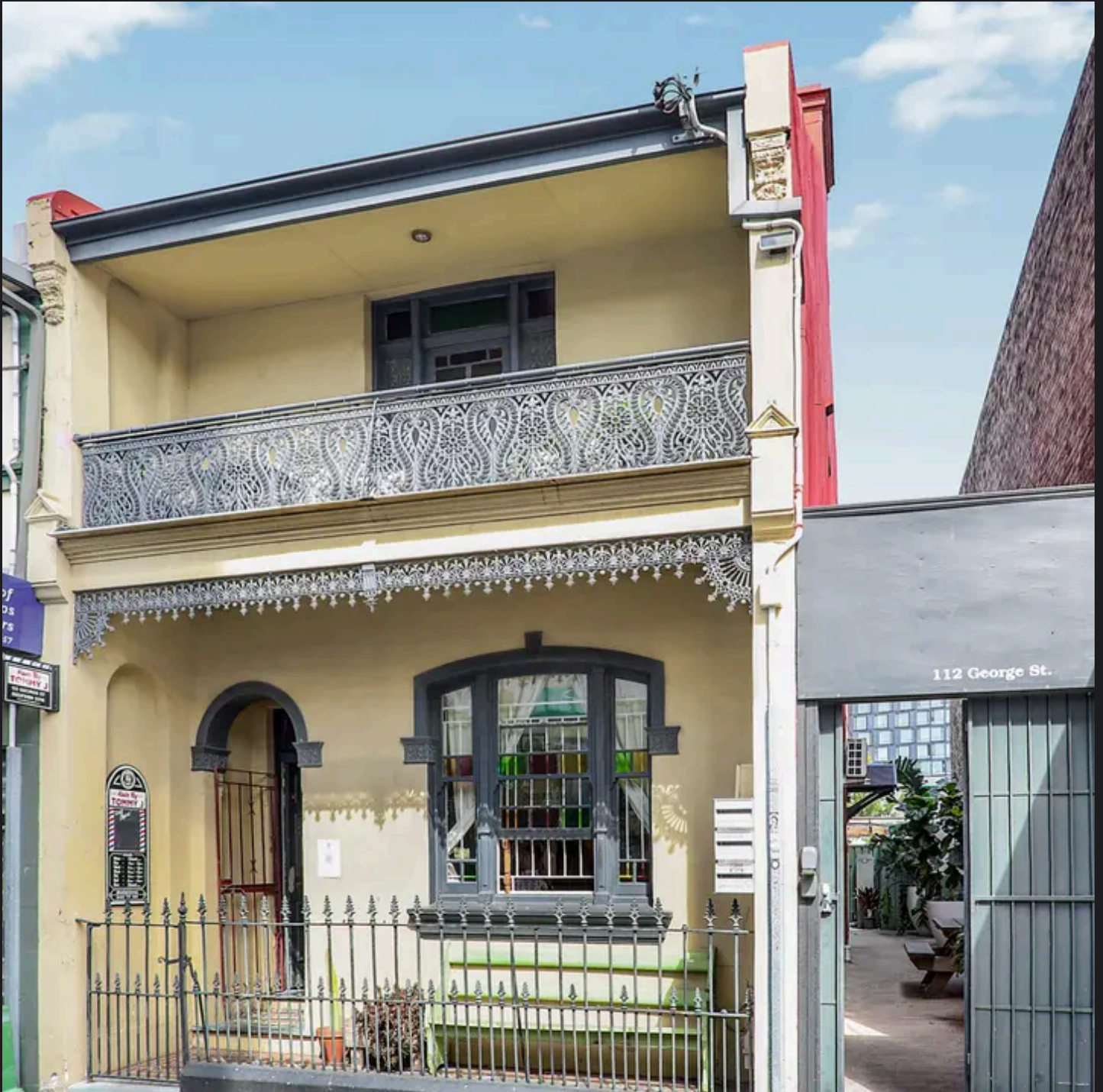


RayWhite®

TOUMA TAYLOR

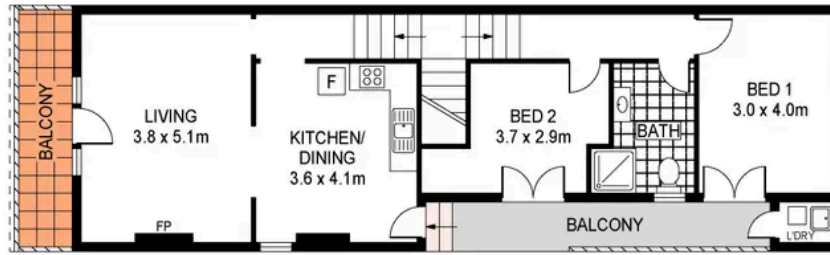


**Exciting commercial/residential prospect
in heart of Redfern**

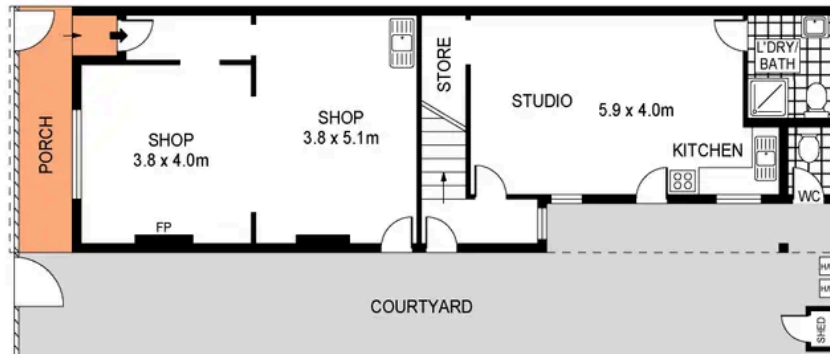
112 George Street, Redfern

4 bed 2 bath

Sold



FIRST FLOOR

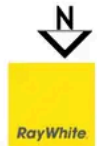


GROUND FLOOR



PLANS SHOWN ONLY INDICATIVE OF LAYOUT. DIMENSIONS ARE APPROXIMATE.
Ref. No: 93120

INT: 154SQM
LAND: 139SQM



112 GEORGE STREET

REDFERN



Charles Touma 0425 305 455
charles.touma@raywhite.com

Con Fotaras 0411 648 458
con.fotaras@raywhite.com

Disclaimer: All information provided is sourced from what we believe to be reliable sources. However, we do not guarantee its accuracy, and interested parties should conduct their own enquiries. Scale in metres. Indicative only. Dimensions are approximate.