

# **RayWhite**<sup>®</sup>

TOUMA TAYLOR

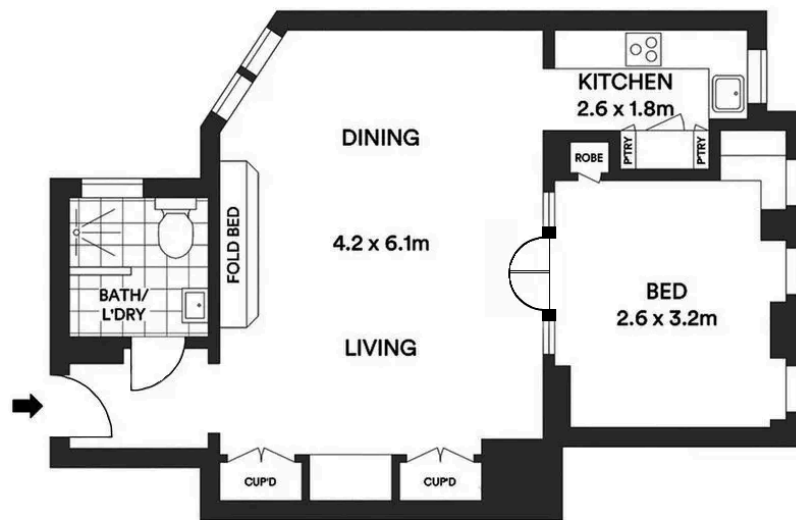


**Elegant Art Deco apartment living**

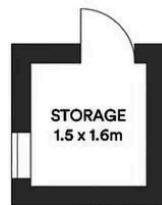
11/25 Elizabeth Bay Road, Elizabeth Bay

1 bed 1 bath

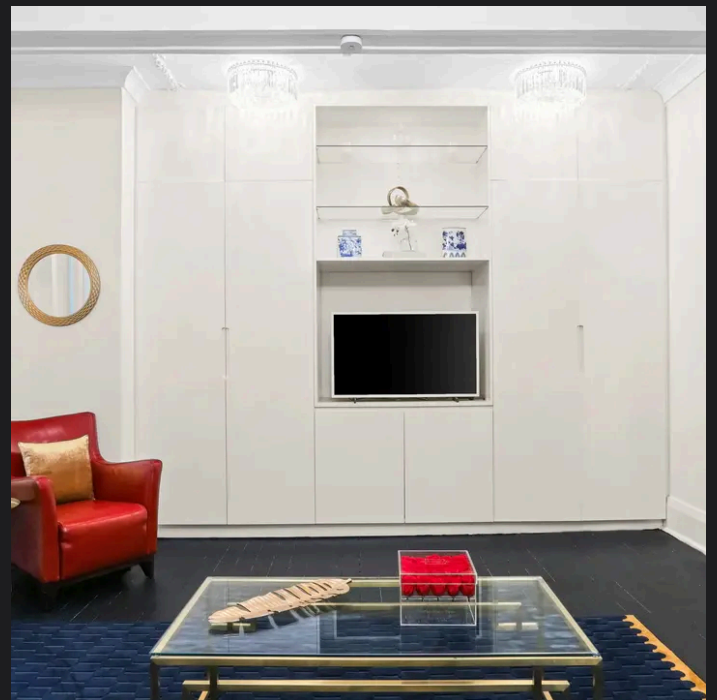
**Sold**



STREET LEVEL



"The information contained herein has been provided by our Principal and third parties, which we merely pass on without any representation or warranty given, intended or implied by us as to its correctness and with no liability accepted by us in this regard. You must rely on your own inquiries as to its accuracy or otherwise."



**Walter Burfitt-Williams 0402 833 566**  
[walter.bw@raywhite.com](mailto:walter.bw@raywhite.com)

**Dalton Stewart 0458 668 119**  
[dalton.stewart@raywhite.com](mailto:dalton.stewart@raywhite.com)

**Disclaimer:** All information provided is sourced from what we believe to be reliable sources. However, we do not guarantee its accuracy, and interested parties should conduct their own enquiries. Scale in metres. Indicative only. Dimensions are approximate.