

RayWhite®

TOUMA TAYLOR

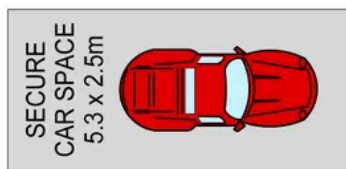


**Cleverly Designed Apartment with a
Premium Finish**

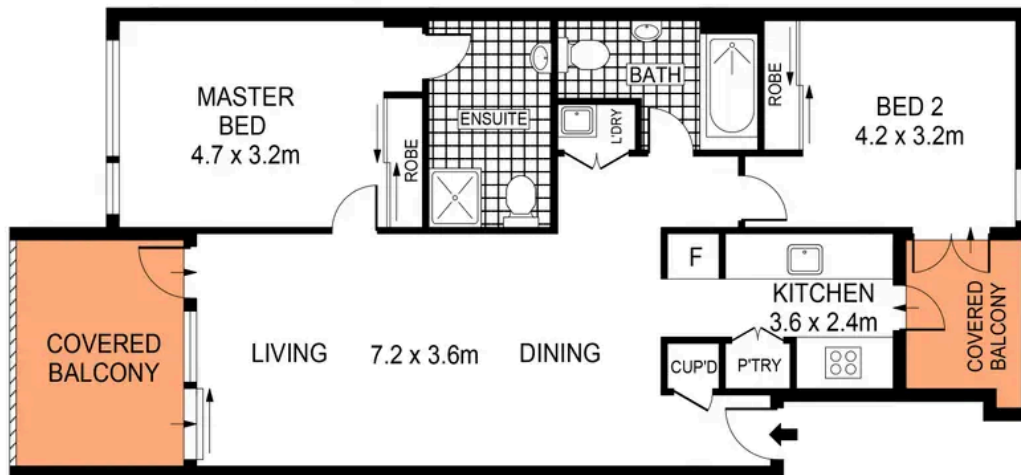
112/791-795 Botany Road, Rosebery

2 bed 2 bath 1 car

Sold



BASEMENT



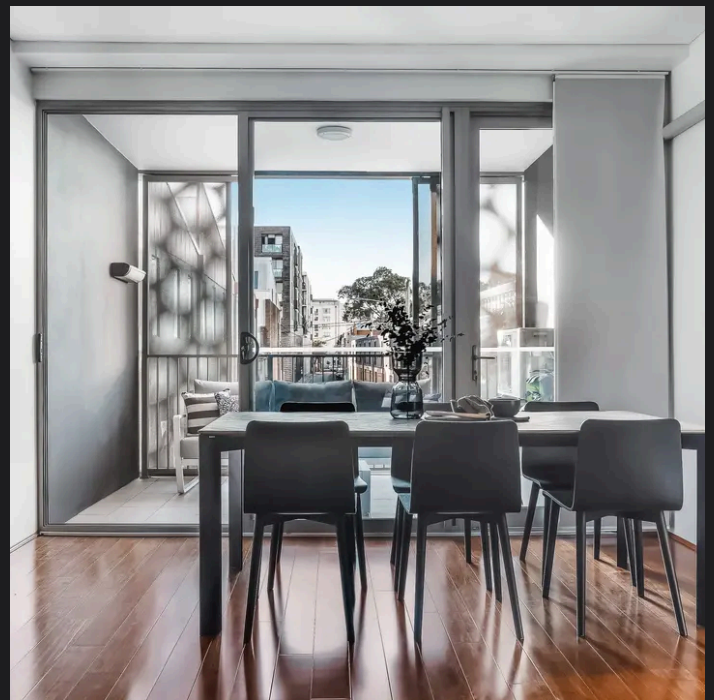
PLANS SHOWN ONLY INDICATIVE OF LAYOUT. DIMENSIONS ARE APPROXIMATE.
Ref. No: 97875

LEVEL ONE



112/791 BOTANY ROAD

ROSEBERY



Max Klimenko 0425 336 555
max.klimenko@raywhite.com

Disclaimer: All information provided is sourced from what we believe to be reliable sources. However, we do not guarantee its accuracy, and interested parties should conduct their own enquiries. Scale in metres. Indicative only. Dimensions are approximate.