

RayWhite®

TOUMA TAYLOR

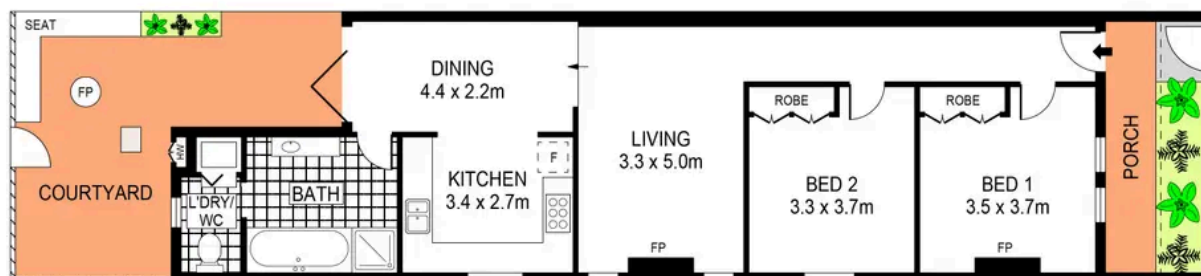


**Charming semi on sun soaked corner block
in prized setting**

113 Baptist Street, Redfern

2 bed 1 bath

Sold



0 1 2 3 4 5
SCALE (METRES)

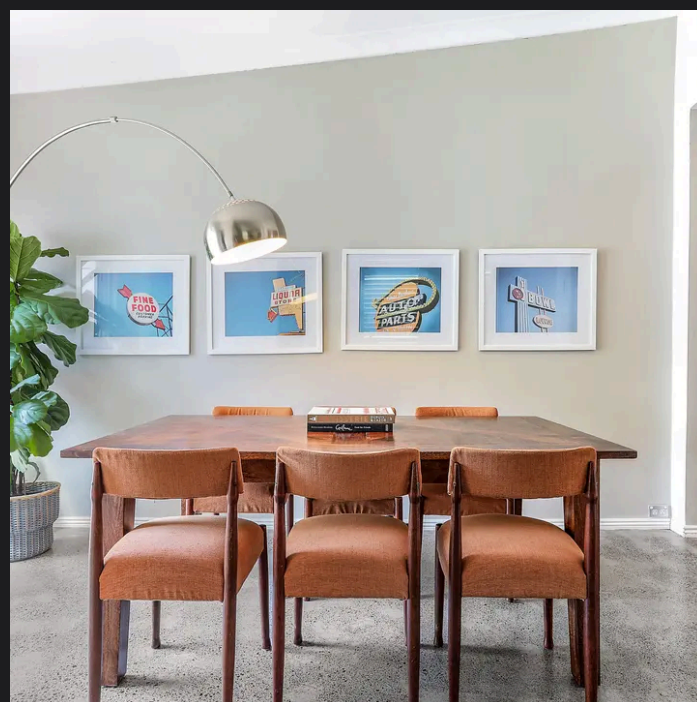
PLANS SHOWN ONLY INDICATIVE OF LAYOUT. DIMENSIONS ARE APPROXIMATE.
Ref. No: 93026



INT : 83m²
LAND SIZE : 134m²

113 BAPTIST STREET

REDFERN



Charles Touma 0425 305 455
charles.touma@raywhite.com

Hayden Richards 0414 872 784
hayden.richards@raywhite.com

Disclaimer: All information provided is sourced from what we believe to be reliable sources. However, we do not guarantee its accuracy, and interested parties should conduct their own enquiries. Scale in metres. Indicative only. Dimensions are approximate.