

RayWhite®

TOUMA TAYLOR



**Two bedroom apartment within 1920s
classic 'Meudon'**

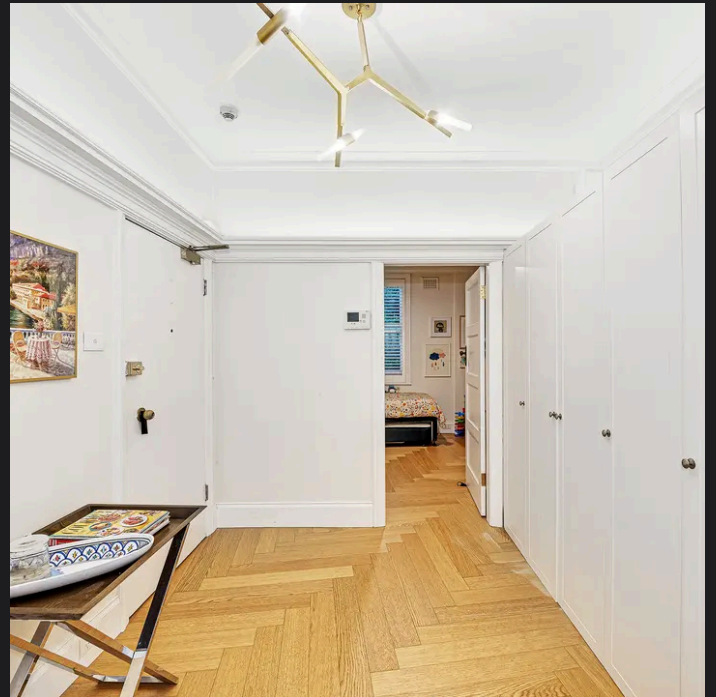
1/13 Onslow Avenue, Elizabeth Bay

2 bed 1 bath

Sold



*PLANS SHOWN ONLY INDICATIVE OF LAYOUT. DIMENSIONS ARE APPROXIMATE.
Floor plan supplied by V Mark Design Pty Ltd. This floor plan is provided for indicative purposes only.
Measurements are approximate and not to scale. The vendor, agency and supplier will accept no liability for its accuracy. Interested parties are advised to make their own independent enquiries.



Walter Burfitt-Williams 0402 833 566
walter.bw@raywhite.com

Dalton Stewart 0458 668 119
dalton.stewart@raywhite.com

Disclaimer: All information provided is sourced from what we believe to be reliable sources. However, we do not guarantee its accuracy, and interested parties should conduct their own enquiries. Scale in metres. Indicative only. Dimensions are approximate.