

RayWhite®

TOUMA TAYLOR



Stunning Dual-Level Terrace in Top Locale

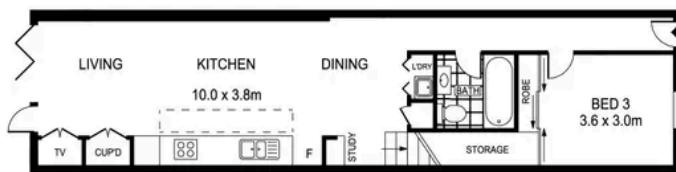
113 Victoria Street, Beaconsfield

3 bed 2 bath 1 car

Sold



SITE PLAN
(NOT TO SCALE)



ENTRY LEVEL



LEVEL ONE



SCALE (METRES)

PLANS SHOWN ONLY INDICATIVE OF LAYOUT. DIMENSIONS ARE APPROXIMATE.
Ref. No: 103237



APPROX. LAND SIZE: 133m²

113 VICTORIA STREET

BEACONSFIELD



Hayden Richards 0414 872 784
hayden.richards@raywhite.com

Disclaimer: All information provided is sourced from what we believe to be reliable sources. However, we do not guarantee its accuracy, and interested parties should conduct their own enquiries. Scale in metres. Indicative only. Dimensions are approximate.