

RayWhite®

TOUMA TAYLOR

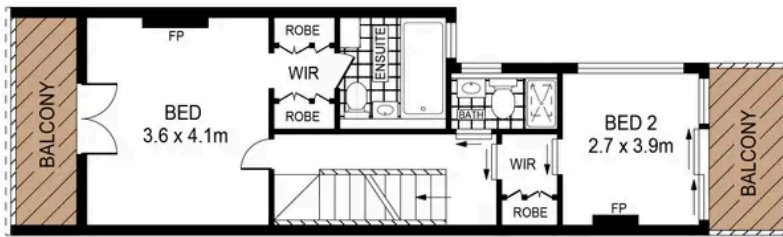


Striking architectural terrace in sought-after cul-de-sac

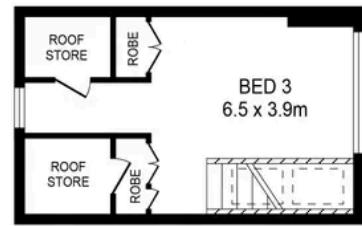
115 Arthur Street, Surry Hills

4 bed 2 bath 1 car

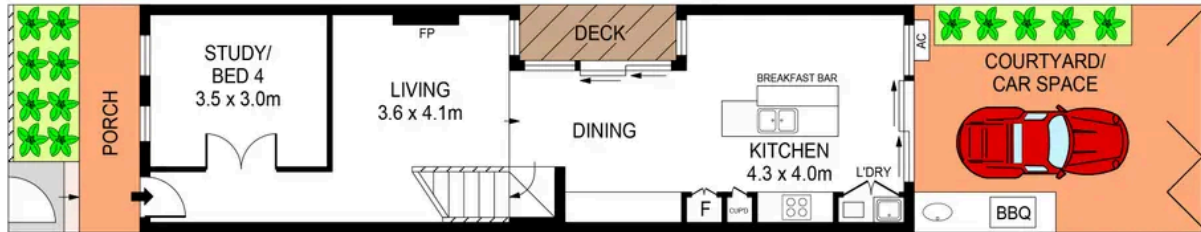
Sold



FIRST FLOOR



SECOND FLOOR



GROUND FLOOR



PLANS SHOWN ONLY INDICATIVE OF LAYOUT. DIMENSIONS ARE APPROXIMATE.
Ref. No: 93590



INT: 127SQM
LAND: 114SQM

115 ARTHUR STREET

SURRY HILLS



Charles Touma 0425 305 455
charles.touma@raywhite.com

Cadan Hickey 0404 206 240
cadan_hickey@raywhite.com

Disclaimer: All information provided is sourced from what we believe to be reliable sources. However, we do not guarantee its accuracy, and interested parties should conduct their own enquiries. Scale in metres. Indicative only. Dimensions are approximate.