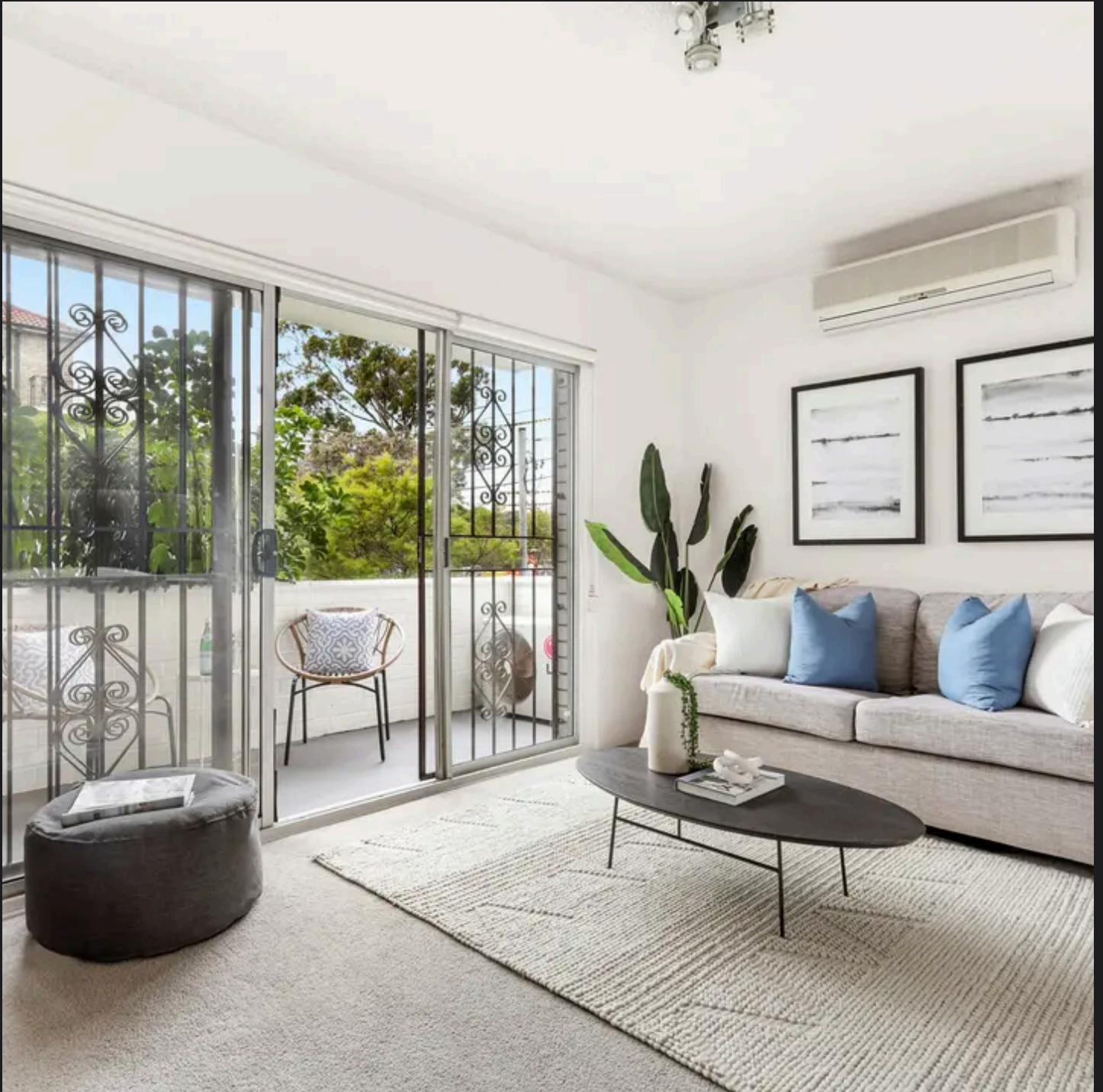


# **RayWhite®**

TOUMA TAYLOR

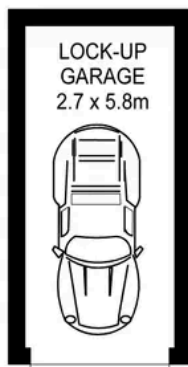


**Wonderful Apartment with Immense  
Investor Appeal**

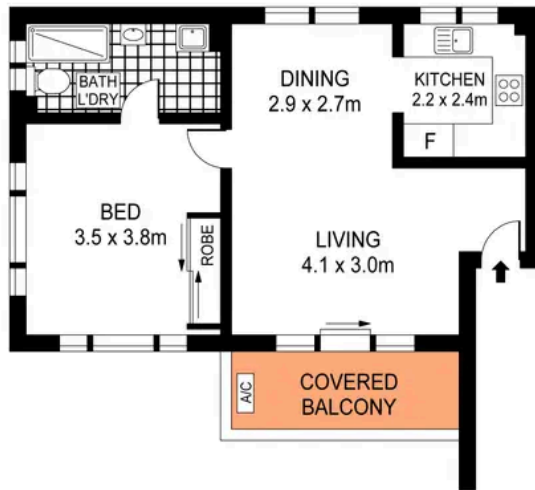
1/15 Doncaster Avenue, Kensington

1 bed 1 bath 1 car

**Sold**



**GROUND LEVEL**



**LEVEL ONE**



PLANS SHOWN ONLY INDICATIVE OF LAYOUT. DIMENSIONS ARE APPROXIMATE.  
Ref. No. 103110

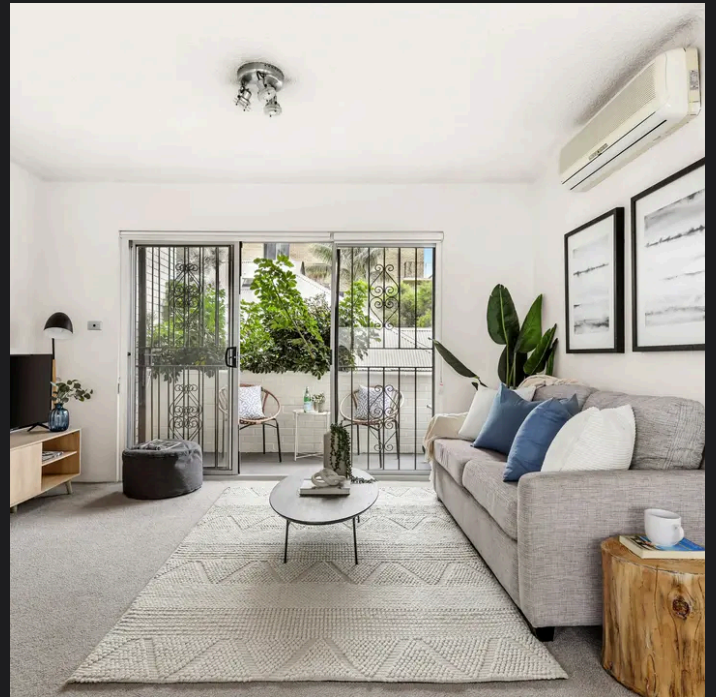


**1/15 DONCASTER AVENUE**

**KENSINGTON**



**Roger Wardy 0481 355 493**  
roger.wardy@raywhite.com



**Max Klimenko 0425 336 555**  
max.klimenko@raywhite.com

**Disclaimer:** All information provided is sourced from what we believe to be reliable sources. However, we do not guarantee its accuracy, and interested parties should conduct their own enquiries. Scale in metres. Indicative only. Dimensions are approximate.