

RayWhite®

TOUMA TAYLOR

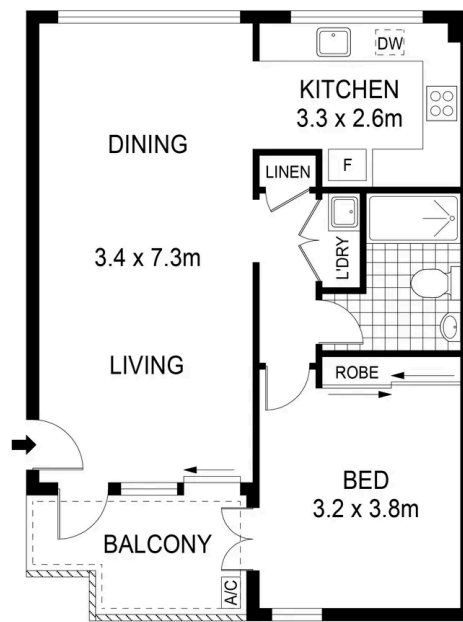


**Tranquil Lifestyle Pad In A Thriving
Location**

115/791-795 Botany Road, Rosebery

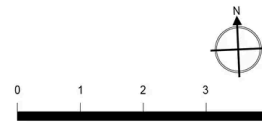
1 bed 1 bath

Sold

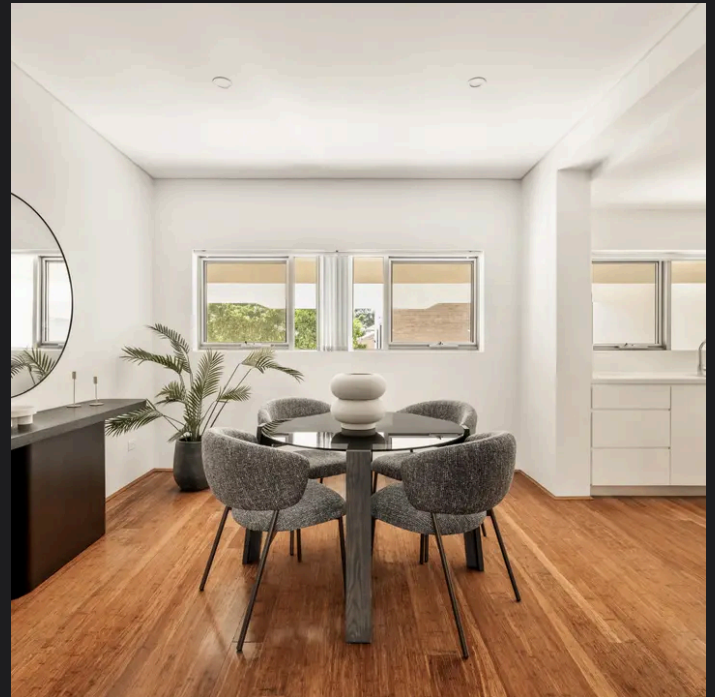


LEVEL ONE

STORAGE
CAGE
4m²



Disclaimer: All information provided is sourced from what we believe to be reliable sources. However, we do not guarantee its accuracy, and interested parties should conduct their own enquiries. Scale in metres. Indicative only. Dimensions are approximate.



Max Klimenko 0425 336 555
max.klimenko@raywhite.com

Dylan Corelli 0458 711 577
dylan.corelli@raywhite.com