

RayWhite®

TOUMA TAYLOR

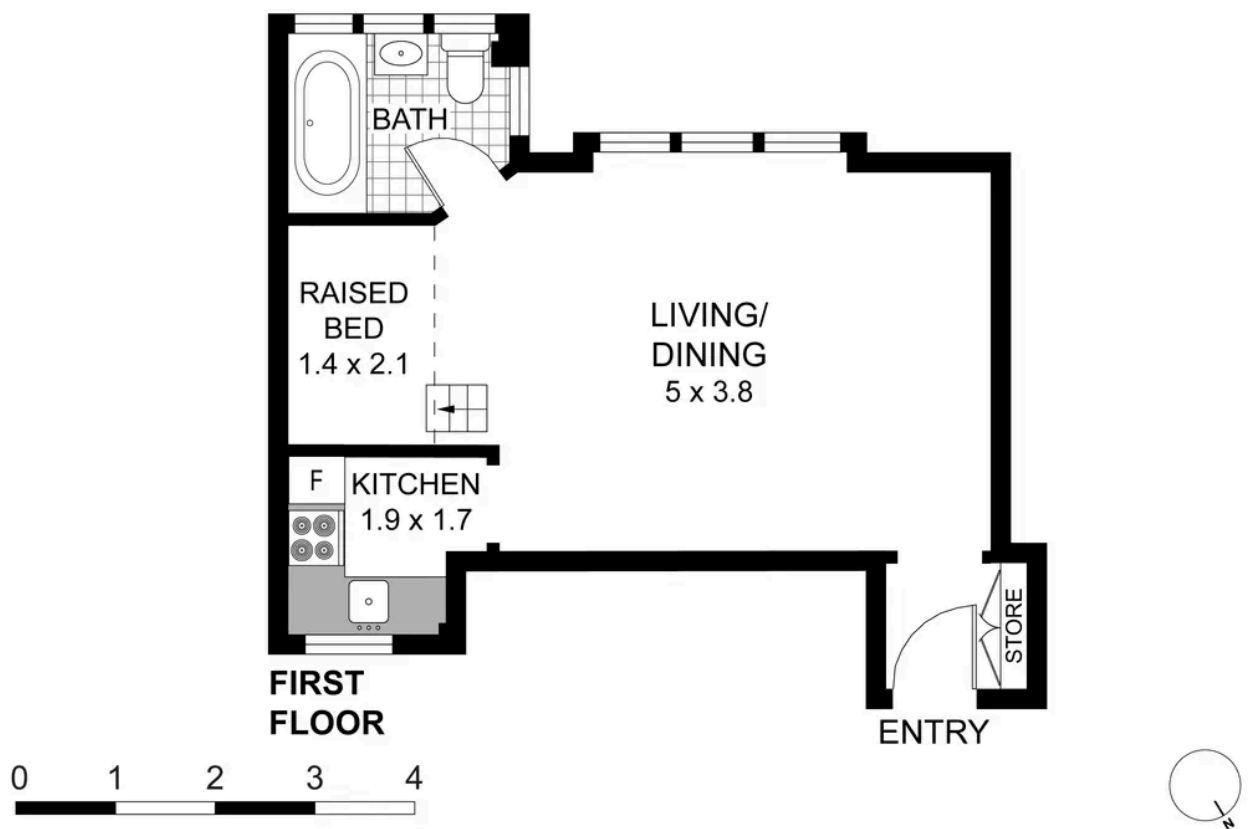


**Spacious studio apartment in the heart of
Elizabeth Bay**

12/3 Crick Avenue, Elizabeth Bay

1 bed 1 bath

Sold



12/3 CRICK AVENUE
ELIZABETH BAY
RAY WHITE TAYLOR & PARTNERS

1 Bedroom, 1 Bathroom
Internal area (approx.) 30sqm
Total area (approx.) 30sqm

PLEASE NOTE: WHILST RAY WHITE TAKES EVERY CARE IN THE PURSUIT OF ACCURACY, THE PLAN IS SHOWN FOR GENERAL GUIDANCE ONLY. ALL AREAS, MEASUREMENTS AND DISTANCES ARE APPROXIMATE AND NOT TO SCALE. RAY WHITE AND OUR VENDOR WILL ACCEPT NO RESPONSIBILITY FOR ITS ACCURACY. INTERESTED PARTIES ARE ADVISED TO MAKE THEIR OWN INDEPENDENT ENQUIRIES.



Disclaimer: All information provided is sourced from what we believe to be reliable sources. However, we do not guarantee its accuracy, and interested parties should conduct their own enquiries. Scale in metres. Indicative only. Dimensions are approximate.