

RayWhite®

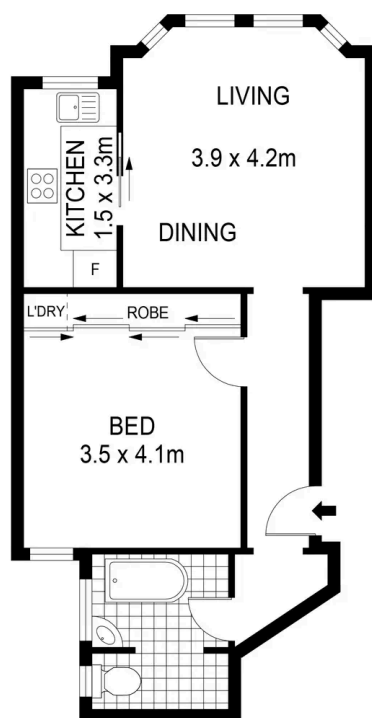
TOUMA TAYLOR



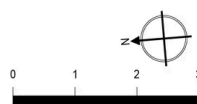
**Timeless Art Deco elegance in a coveted
leafy enclave**

12/3 Springfield Avenue, Potts Point

1 bed 1 bath



LEVEL THREE



Disclaimer: All information provided is sourced from what we believe to be reliable sources. However, we do not guarantee its accuracy, and interested parties should conduct their own enquiries. Scale in metres. Indicative only. Dimensions are approximate.



Renee Cross 0413 764 566
renee.cross@raywhite.com

Nickolas Voloshanskyi
nickolas.voloshanskyi@raywhite.com