

RayWhite®

TOUMA TAYLOR



Peaceful Terrace Designed for Easy Living

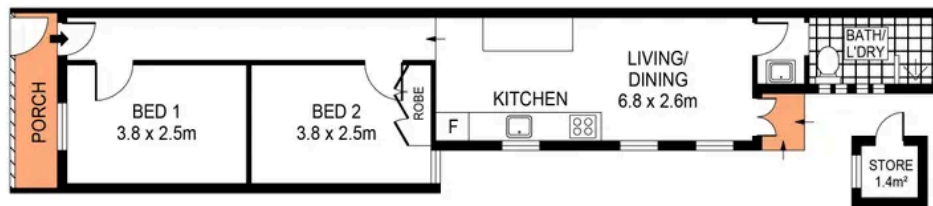
125 Young Street, Redfern

2 bed 1 bath

Sold



SITE PLAN
(NOT TO SCALE)



0 1 2 3 4 5
SCALE (METRES)

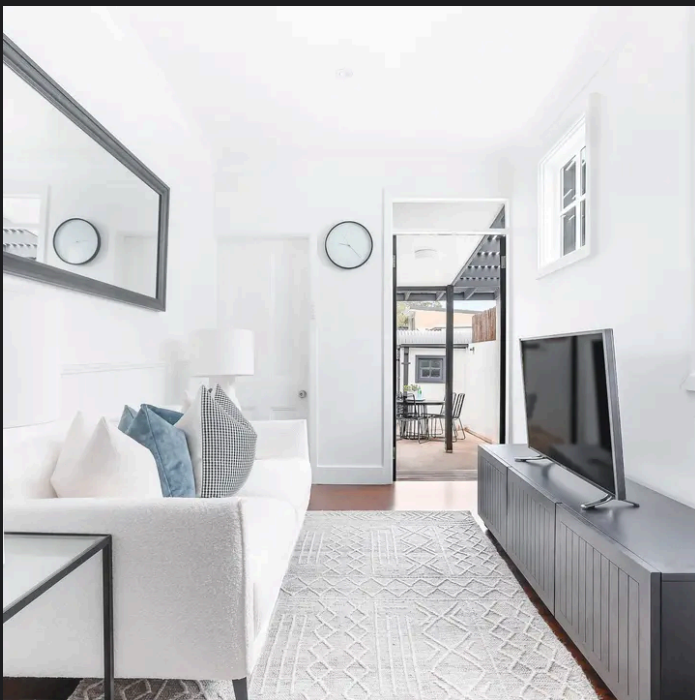
PLANS SHOWN ONLY INDICATIVE OF LAYOUT. DIMENSIONS ARE APPROXIMATE.
Ref. No: 98845

APPROX. LAND SIZE: 120m²



125 YOUNG STREET

REDFERN



Charles Touma 0425 305 455
charles.touma@raywhite.com

Hayden Richards 0414 872 784
hayden.richards@raywhite.com

Disclaimer: All information provided is sourced from what we believe to be reliable sources. However, we do not guarantee its accuracy, and interested parties should conduct their own enquiries. Scale in metres. Indicative only. Dimensions are approximate.