

RayWhite®

TOUMA TAYLOR

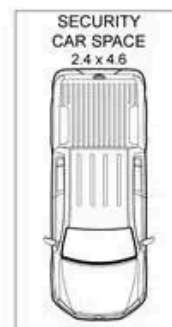
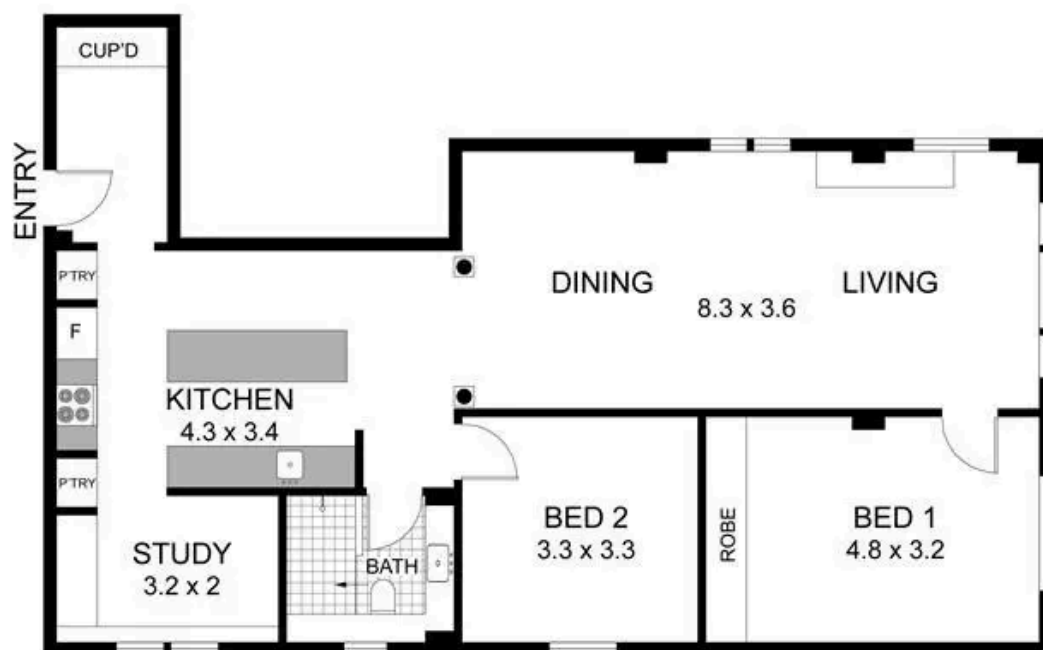


**Luxury lifestyle in a blue ribbon address -
Car space optional**

12a/6a Greenknowe Avenue, Elizabeth Bay

2 bed 1 bath 1 car

Sold



Located in 15-19
Onslow Avenue



12A/6A GREENKNOWE AVENUE
ELIZABETH BAY
RAY WHITE TAYLOR & PARTNERS

2 Bedroom, 1 Bath, 1 Car

Internal area (approx.) 97sqm
Total area (approx.) 108sqm



PLEASE NOTE: WHILST RAY WHITE TAKES EVERY CARE IN THE PURSUIT OF ACCURACY, THE PLAN IS SHOWN FOR GENERAL GUIDANCE ONLY. ALL AREAS, MEASUREMENTS AND DISTANCES ARE APPROXIMATE AND NOT TO SCALE. RAY WHITE AND OUR VENDOR WILL ACCEPT NO RESPONSIBILITY FOR ITS ACCURACY. INTERESTED PARTIES ARE ADVISED TO MAKE THEIR OWN INDEPENDENT ENQUIRIES.



Disclaimer: All information provided is sourced from what we believe to be reliable sources. However, we do not guarantee its accuracy, and interested parties should conduct their own enquiries. Scale in metres. Indicative only. Dimensions are approximate.