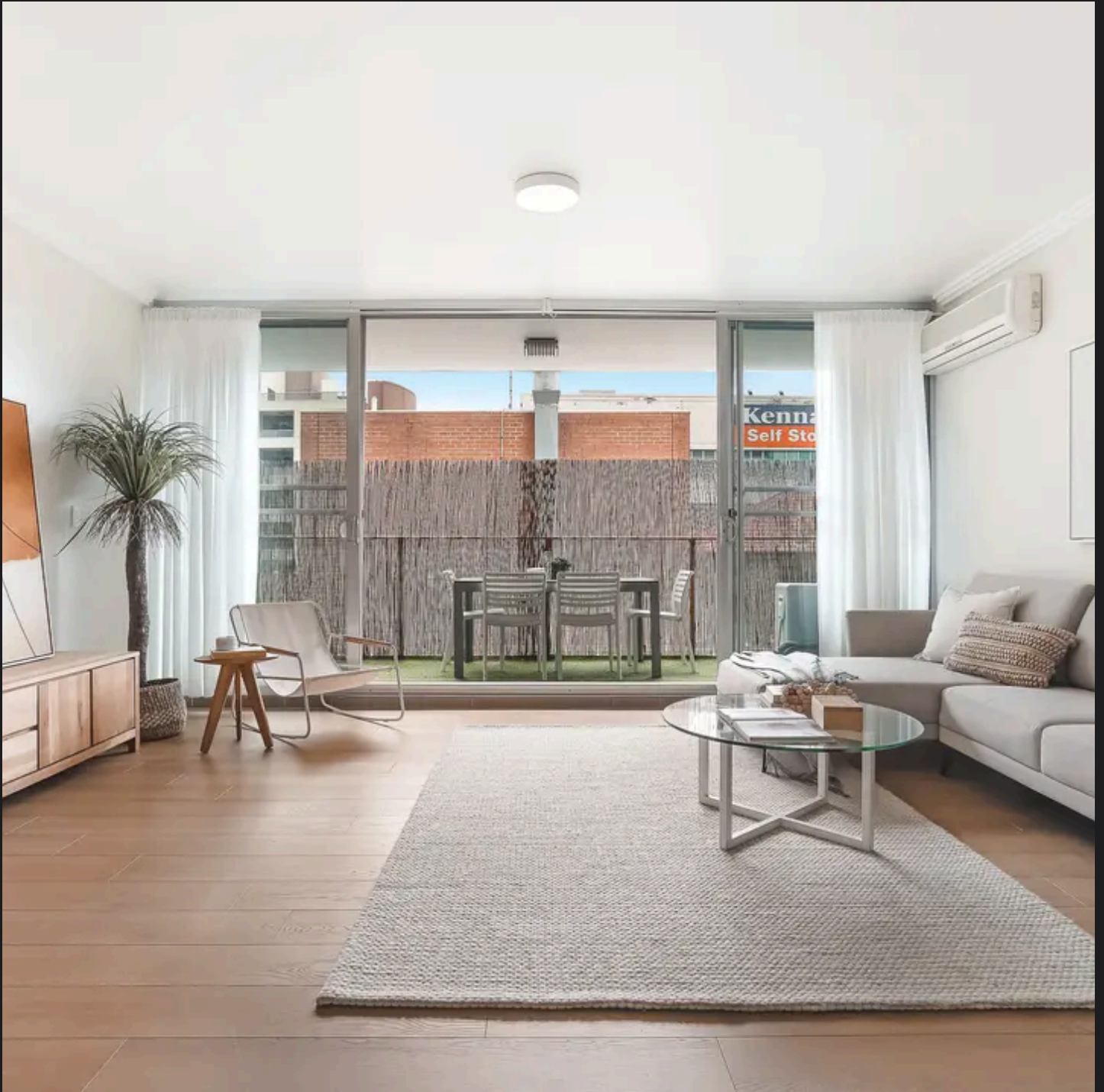


RayWhite®

TOUMA TAYLOR

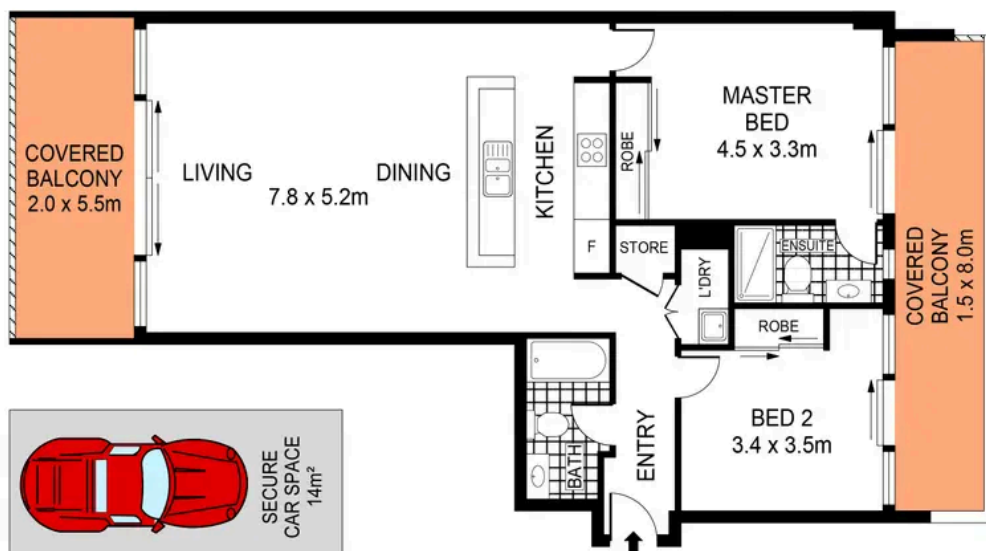


**Modern Comfort, Style and Ease of Living
in Boutique Complex**

13/1-11 Murray Street, Waterloo

2 bed 2 bath 1 car

Sold



BASEMENT

LEVEL THREE



0 1 2 3 4 5 SCALE (METRES)

PLANS SHOWN ONLY INDICATIVE OF LAYOUT. DIMENSIONS ARE APPROXIMATE.
Ref. No: 94995



13/1-11 MURRAY STREET

WATERLOO



Max Klimenko 0425 336 555
max.klimenko@raywhite.com

Disclaimer: All information provided is sourced from what we believe to be reliable sources. However, we do not guarantee its accuracy, and interested parties should conduct their own enquiries. Scale in metres. Indicative only. Dimensions are approximate.