

RayWhite®

TOUMA TAYLOR

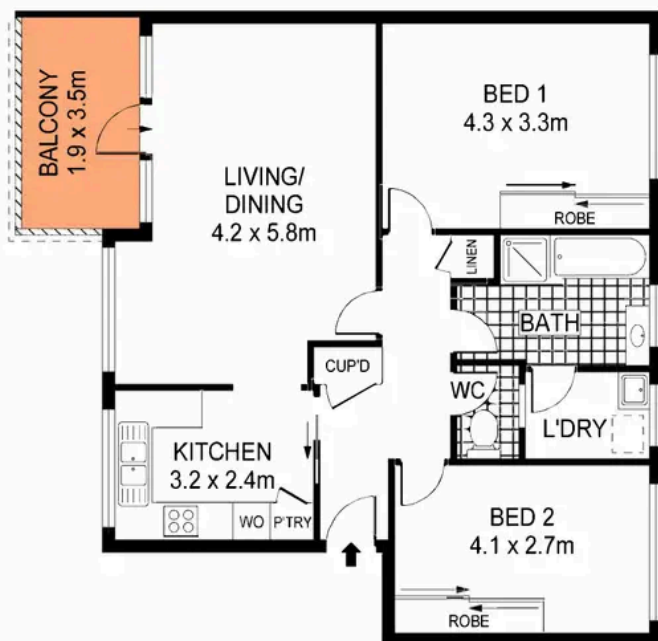


Light Soaked Lifestyle Abode In Ultra-Convenient Location

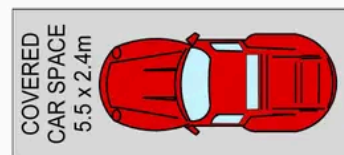
13/32 Rainbow Street, Kingsford

2 bed 1 bath 1 car

Sold



LEVEL ONE



GROUND LEVEL



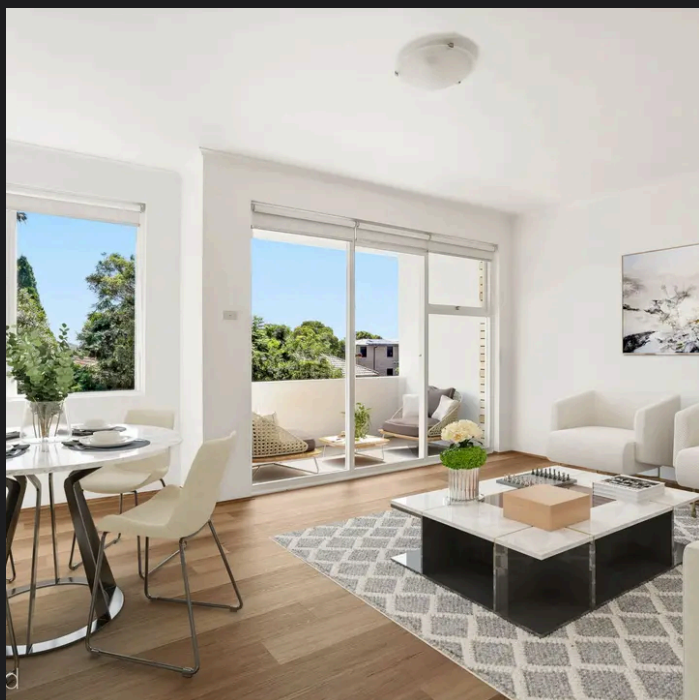
PLANS SHOWN ONLY INDICATIVE OF LAYOUT. DIMENSIONS ARE APPROXIMATE.
Ref. No. 108474

Total Unit Size : 101sqm



13/32 RAINBOW STREET

KINGSFORD



Roger Wardy 0481 355 493
roger.wardy@raywhite.com

Disclaimer: All information provided is sourced from what we believe to be reliable sources. However, we do not guarantee its accuracy, and interested parties should conduct their own enquiries. Scale in metres. Indicative only. Dimensions are approximate.