

RayWhite®

TOUMA TAYLOR

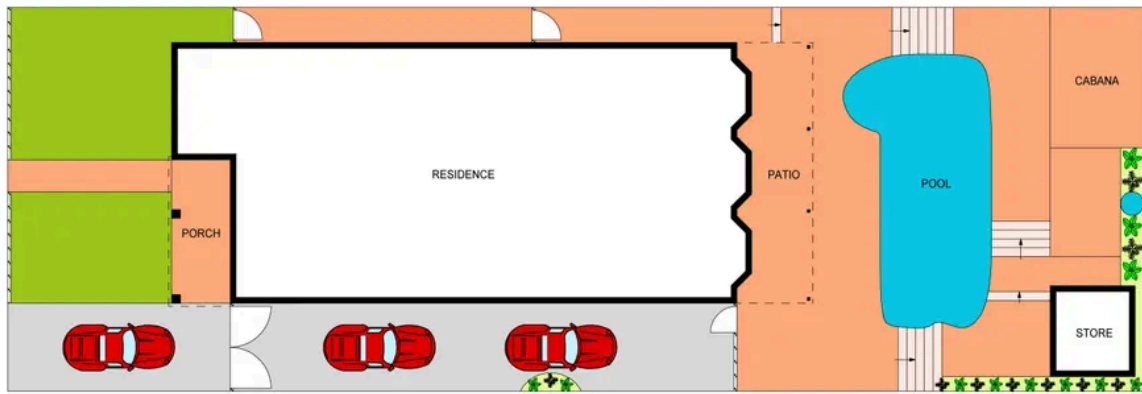


**Tightly-Held Family Residence in
Kingsford's Finest Street**

14 Goodrich Avenue, Kingsford

5 bed 4 bath 3 car

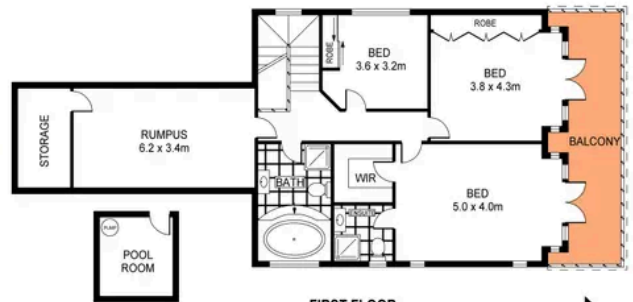
Sold



SITE PLAN
(NOT TO SCALE)



GROUND FLOOR



FIRST FLOOR

0 1 2 3 4 5
SCALE (METRES)

PLANS SHOWN ONLY INDICATIVE OF LAYOUT. DIMENSIONS ARE APPROXIMATE.
Ref. No: 103008



14 GOODRICH AVENUE

KINGSFORD



Roger Wardy 0481 355 493
roger.wardy@raywhite.com

Disclaimer: All information provided is sourced from what we believe to be reliable sources. However, we do not guarantee its accuracy, and interested parties should conduct their own enquiries. Scale in metres. Indicative only. Dimensions are approximate.