

# **RayWhite®**

TOUMA TAYLOR

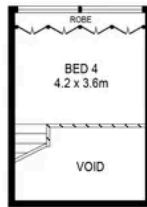
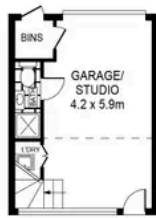


**Inner City Oasis Designed by Vaughan  
Architects**

140 Devonshire Street, Surry Hills

4 bed 4 bath 1 car

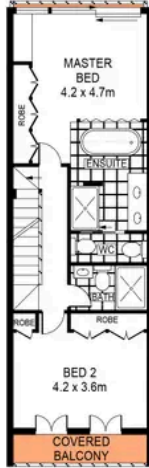
**Sold**



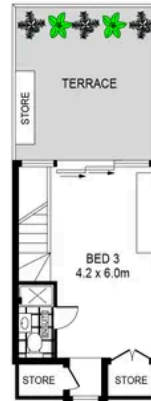
ABOVE GARAGE



GROUND FLOOR



FIRST FLOOR



SECOND FLOOR



SITE PLAN  
(NOT TO SCALE)



Land: 133SQM

SCALE (METRES)

PLANS SHOWN ONLY INDICATIVE OF LAYOUT. DIMENSIONS ARE APPROXIMATE.  
Ref. No: 95589

140 DEVONSHIRE STREET

SURRY HILLS



**Charles Touma 0425 305 455**  
charles.touma@raywhite.com



**Hayden Richards 0414 872 784**  
hayden.richards@raywhite.com

**Disclaimer:** All information provided is sourced from what we believe to be reliable sources. However, we do not guarantee its accuracy, and interested parties should conduct their own enquiries. Scale in metres. Indicative only. Dimensions are approximate.