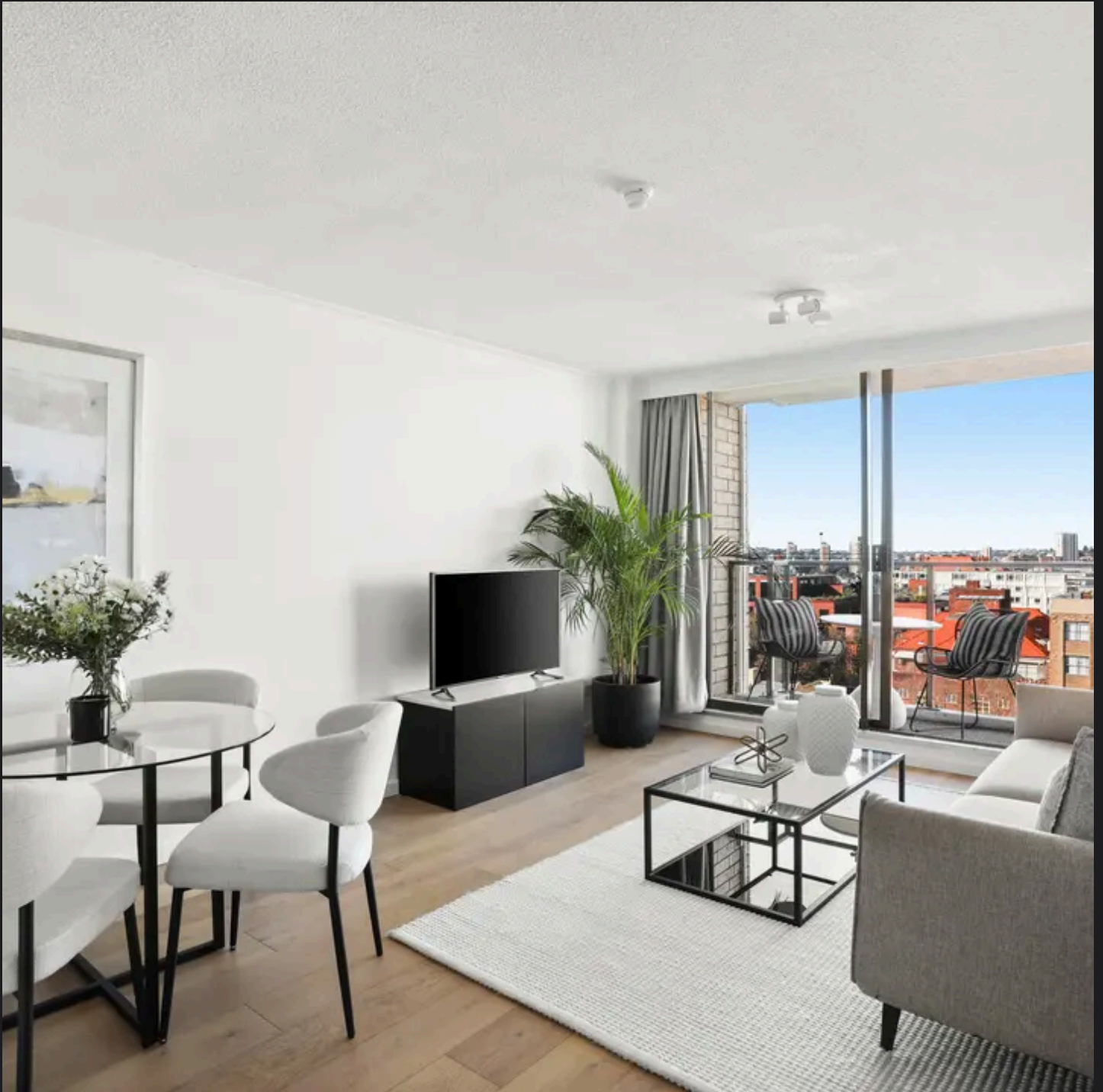


RayWhite®

TOUMA TAYLOR

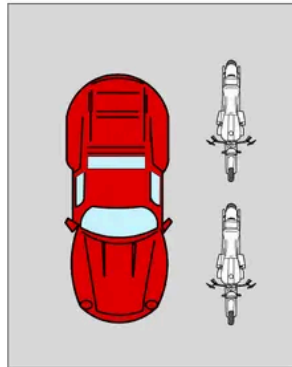


**Elite Apartment of Impressive Style &
Placement**

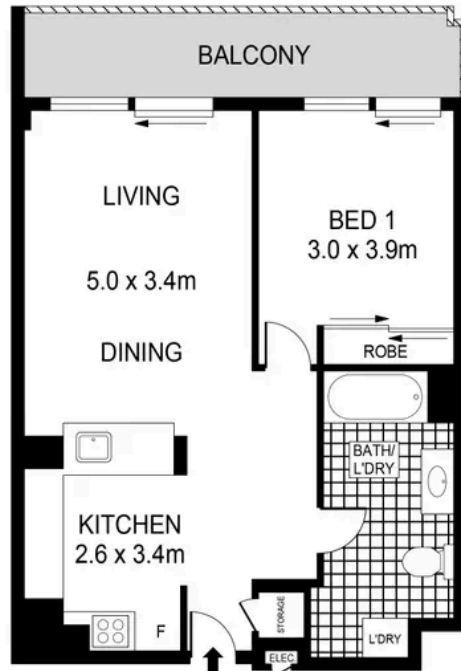
1406/5-15 Orwell Street, Potts Point

1 bed 1 bath 1 car

Sold



SECURE
PARKING
22m²



LEVEL FOURTEEN

0 1 2 3 4
SCALE (METRES)

PLANS SHOWN ONLY INDICATIVE OF LAYOUT. DIMENSIONS ARE APPROXIMATE.
Ref. No: 103648



RayWhite

1406/5-15 ORWELL STREET

POTTS POINT



Charles Tuma 0425 305 455
charles.tuma@raywhite.com

Max Klimenko 0425 336 555
max.klimenko@raywhite.com

Disclaimer: All information provided is sourced from what we believe to be reliable sources. However, we do not guarantee its accuracy, and interested parties should conduct their own enquiries. Scale in metres. Indicative only. Dimensions are approximate.