

RayWhite®

TOUMA TAYLOR

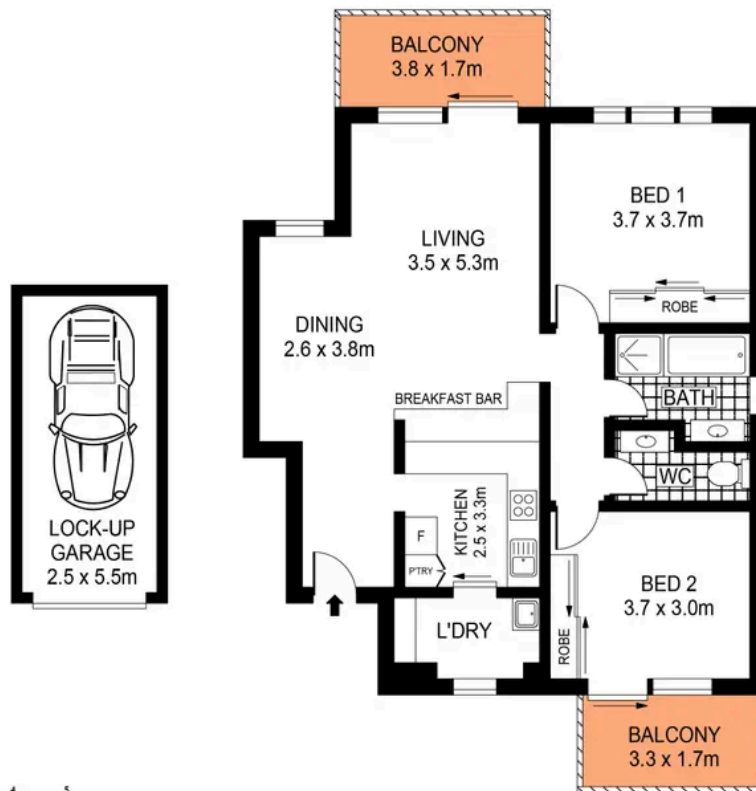


**Impeccable 'Gloucester Gardens'
Apartment in Quiet Off-Street Setting**

14/1-7 Gloucester Place, Kensington

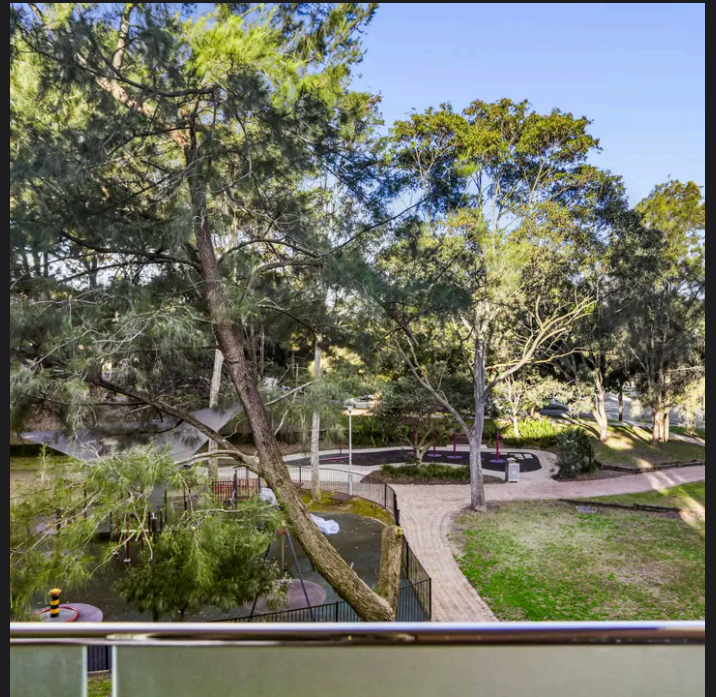
2 bed 1 bath 1 car

Sold



14/1-7 GLOUCESTER PLACE

KENSINGTON



Roger Wardy 0481 355 493
roger.wardy@raywhite.com

Disclaimer: All information provided is sourced from what we believe to be reliable sources. However, we do not guarantee its accuracy, and interested parties should conduct their own enquiries. Scale in metres. Indicative only. Dimensions are approximate.