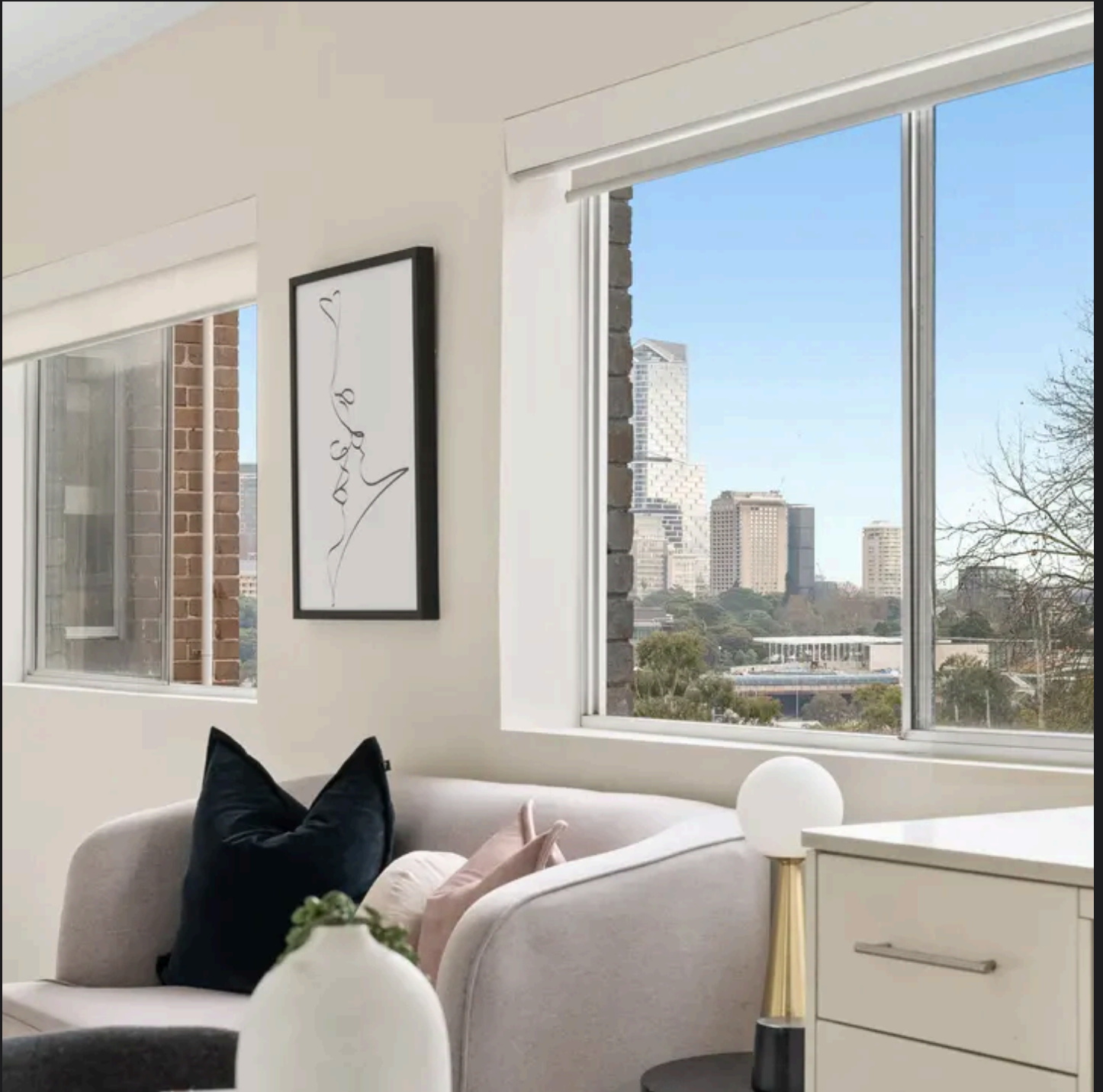


RayWhite®

TOUMA TAYLOR



**Superb city pad/investment prospect in
the heart of Potts Point**

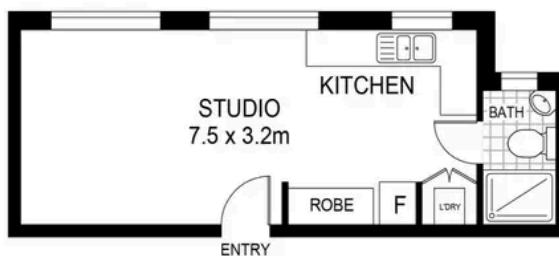
14/165 Victoria Street, Potts Point

1 bath



RayWhite

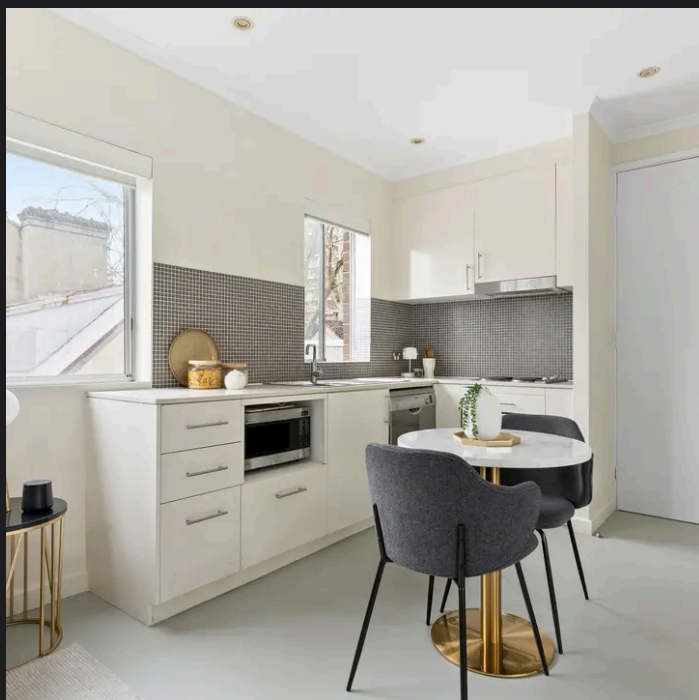
TOUMA TAYLOR



14/165 VICTORIA STREET,
POTTS POINT

Internal area (approx.) 27sqm

PLEASE NOTE: WHILST RAY WHITE TAKES EVERY CARE IN THE PURSUIT OF ACCURACY, THE PLAN IS SHOWN FOR GENERAL GUIDANCE ONLY. ALL AREAS, MEASUREMENTS AND DISTANCES ARE APPROXIMATE AND NOT TO SCALE. RAY WHITE AND OUR VENDOR WILL ACCEPT NO RESPONSIBILITY FOR ITS ACCURACY. INTERESTED PARTIES ARE ADVISED TO MAKE THEIR OWN INDEPENDENT ENQUIRIES.



Renee Cross 0413 764 566
renee.cross@raywhite.com

Ana Oteri 0435383114
ana.oteri@raywhite.com

Disclaimer: All information provided is sourced from what we believe to be reliable sources. However, we do not guarantee its accuracy, and interested parties should conduct their own enquiries. Scale in metres. Indicative only. Dimensions are approximate.