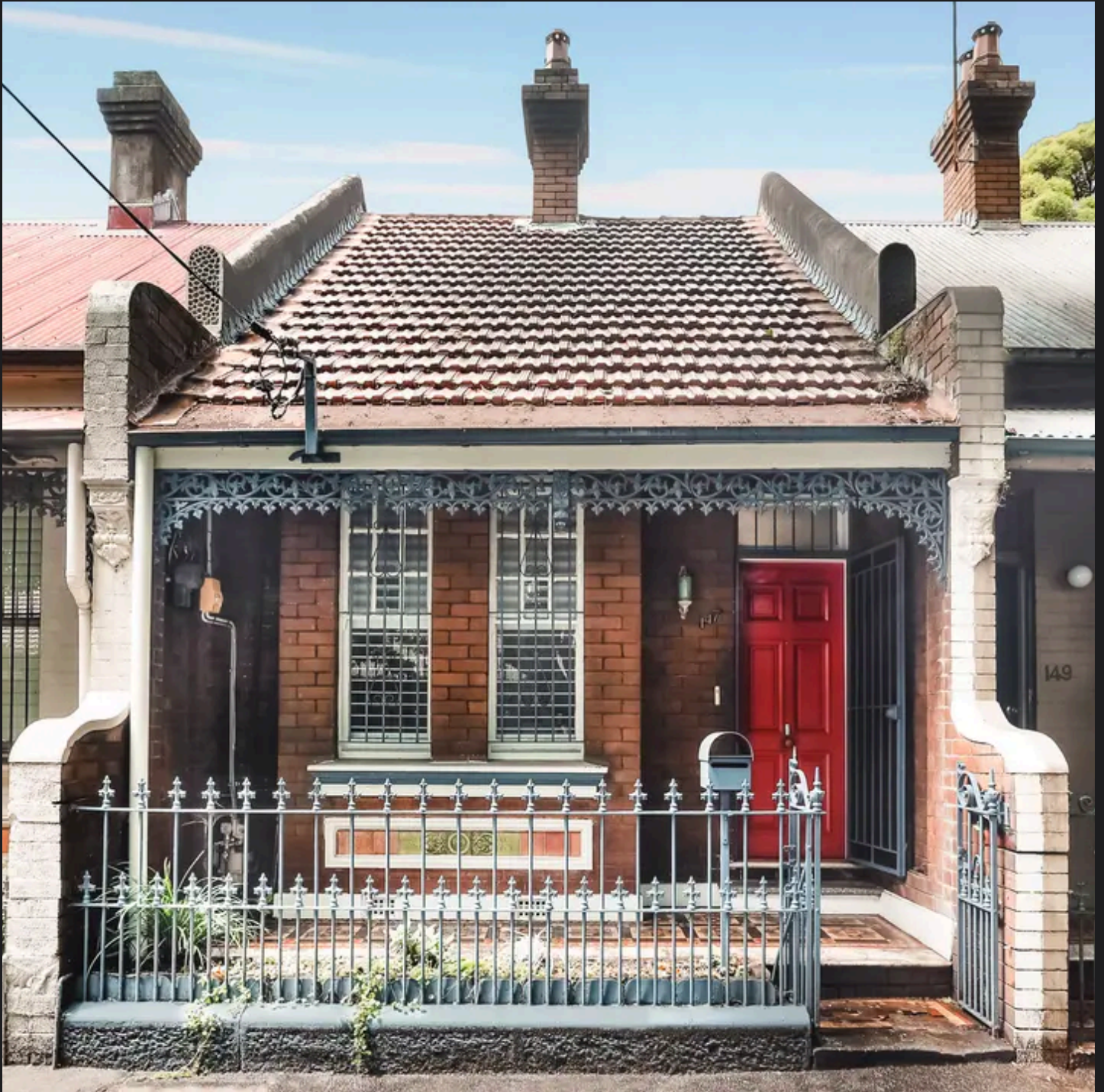


RayWhite®

TOUMA TAYLOR



Fantastic Home in Idyllic Setting

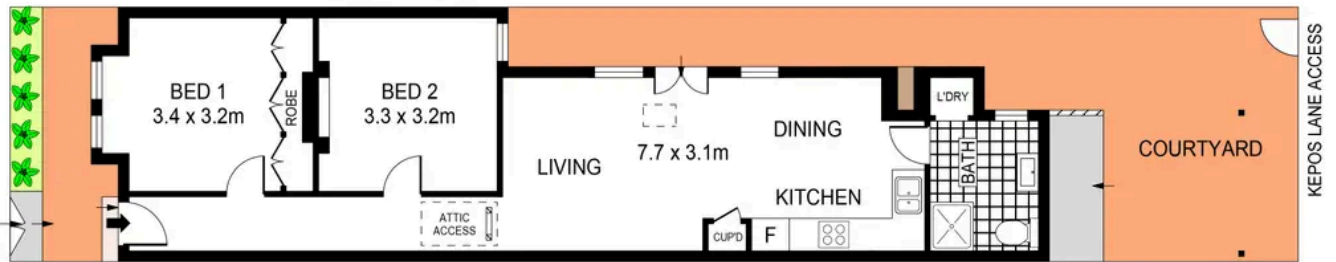
147 Baptist Street, Redfern

2 bed 1 bath

Sold



ATTIC LEVEL



GROUND LEVEL



PLANS SHOWN ONLY INDICATIVE OF LAYOUT. DIMENSIONS ARE APPROXIMATE.
Ref. No: 95454

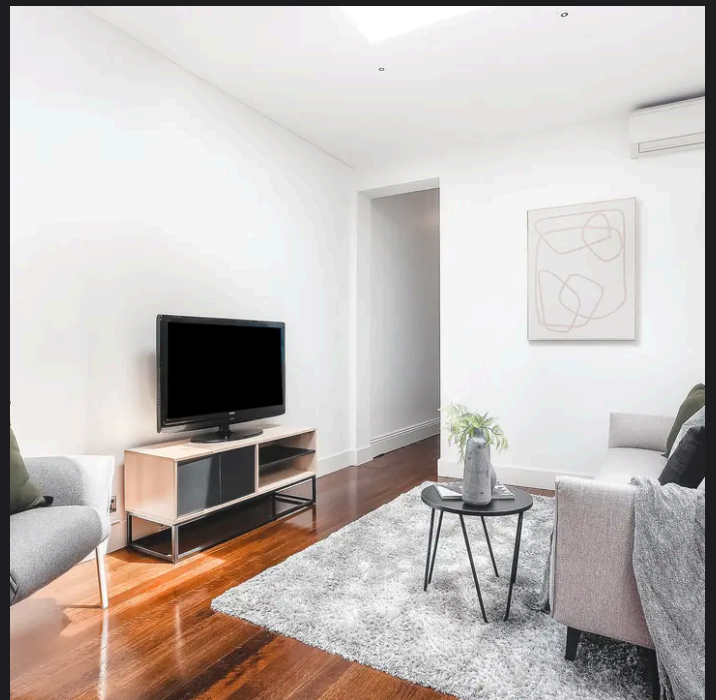
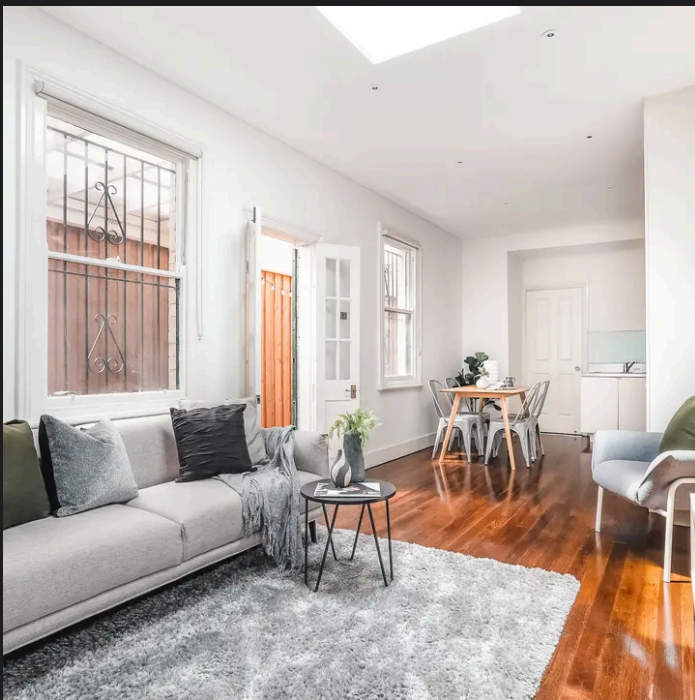


Land Size: 108m²

RayWhite

147 BAPTIST STREET

REDFEM



Charles Tuma 0425 305 455
charles.tuma@raywhite.com

Hayden Richards 0414 872 784
hayden.richards@raywhite.com

Disclaimer: All information provided is sourced from what we believe to be reliable sources. However, we do not guarantee its accuracy, and interested parties should conduct their own enquiries. Scale in metres. Indicative only. Dimensions are approximate.