

RayWhite®

TOUMA TAYLOR

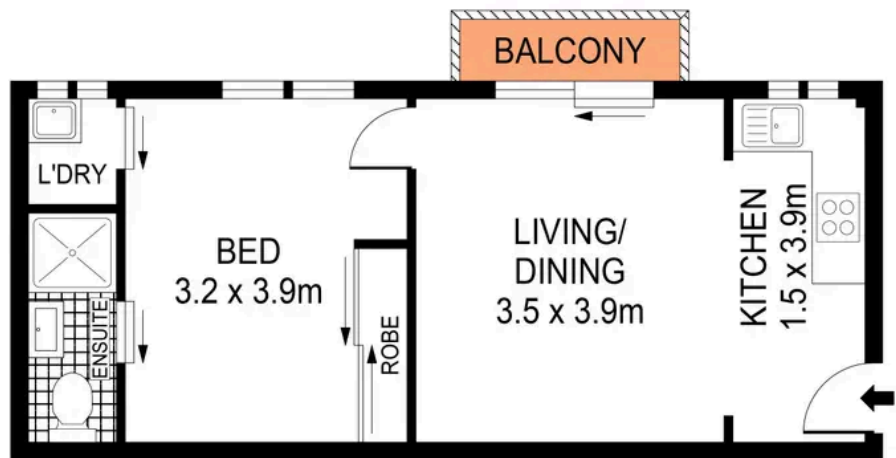
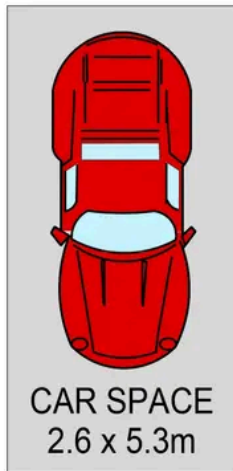


**Light And Airy Lifestyle Haven, Footsteps
To Buzzing Cafes**

14/761 Bourke Street, Redfern

1 bed 1 bath 1 car

Sold



GROUND LEVEL

LEVEL 2

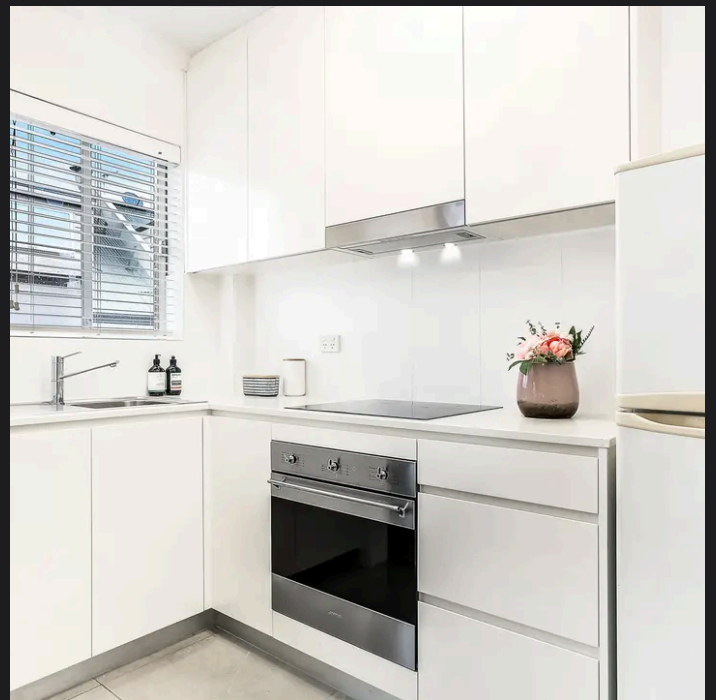
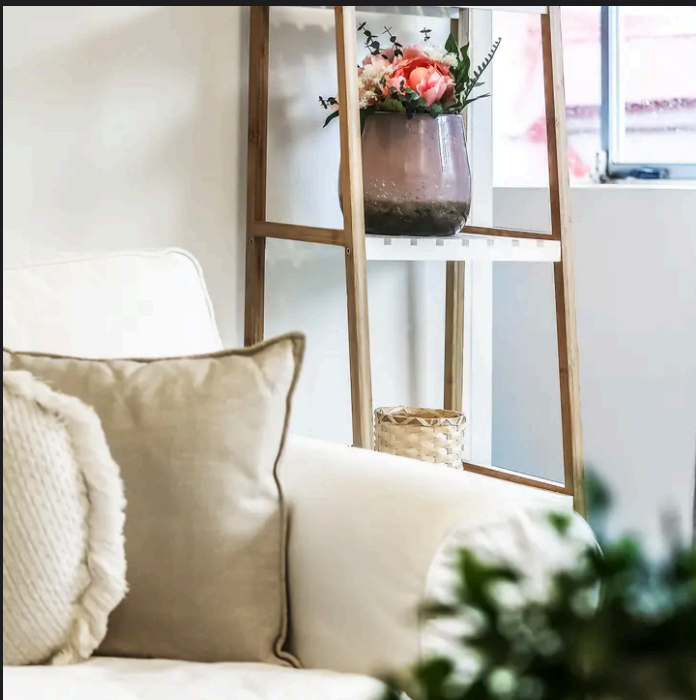


PLANS SHOWN ONLY INDICATIVE OF LAYOUT. DIMENSIONS ARE APPROXIMATE.
Ref. No: 87236



14/761 BOURKE STREET

REDFERN



Max Klimenko 0425 336 555
max.klimenko@raywhite.com

Charles Tuma 0425 305 455
charles.tuma@raywhite.com

Disclaimer: All information provided is sourced from what we believe to be reliable sources. However, we do not guarantee its accuracy, and interested parties should conduct their own enquiries. Scale in metres. Indicative only. Dimensions are approximate.