

RayWhite®

TOUMA TAYLOR

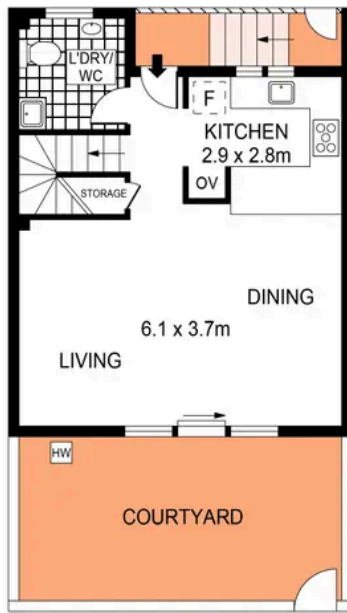


**Superb Tri-Level Townhouse with Sun
Drenched Alfresco Spaces**

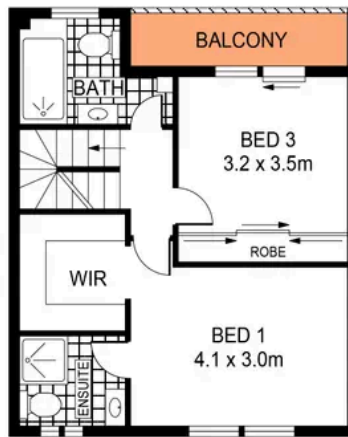
14/7A Ivy Street, Darlington

3 bed 2 bath 1 car

Sold



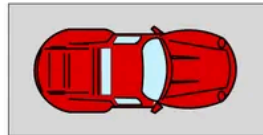
GROUND FLOOR



FIRST FLOOR



SECOND FLOOR



CAR SPACE

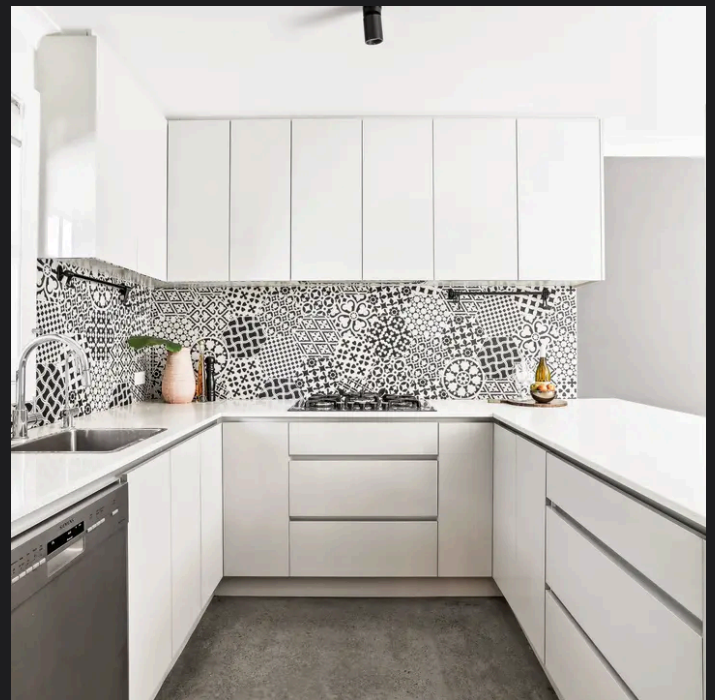
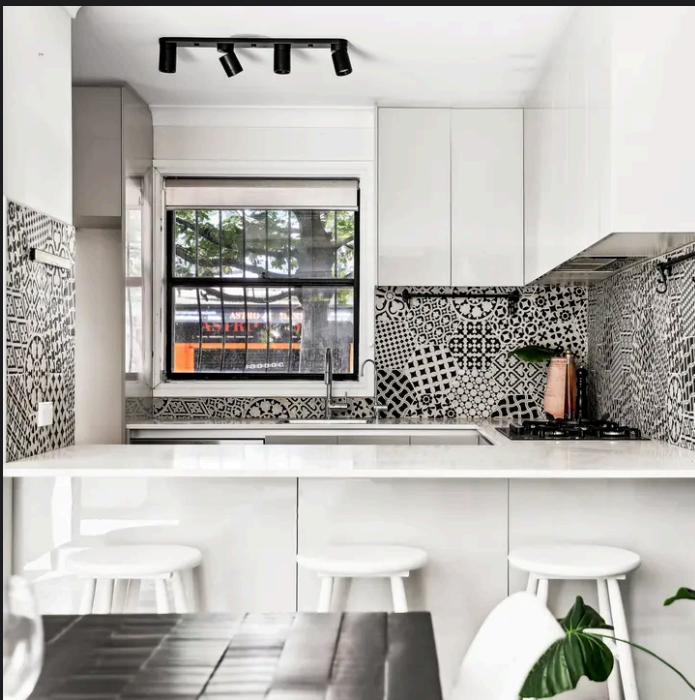
0 1 2 3 4 5 SCALE (METRES)

PLANS SHOWN ONLY INDICATIVE OF LAYOUT. DIMENSIONS ARE APPROXIMATE.
Ref. No: 108531



14/7A IVY STREET

DARLINGTON



Hayden Richards 0414 872 784
hayden.richards@raywhite.com

Disclaimer: All information provided is sourced from what we believe to be reliable sources. However, we do not guarantee its accuracy, and interested parties should conduct their own enquiries. Scale in metres. Indicative only. Dimensions are approximate.