

# RayWhite®

TOUMA TAYLOR

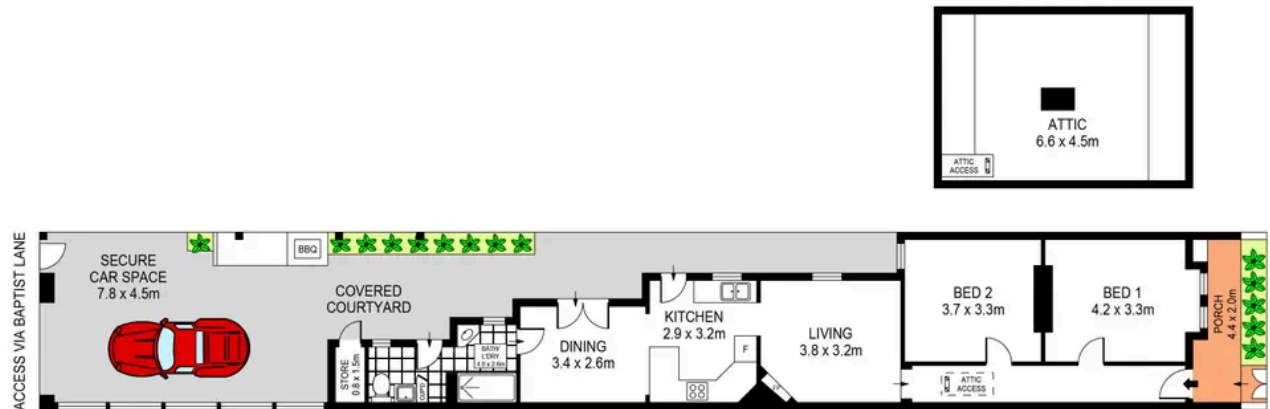


**132sqm Sunny Terrace with Parking in  
Vibing Location**

150 Baptist Street, Redfern

2 bed 1 bath 1 car

**Sold**



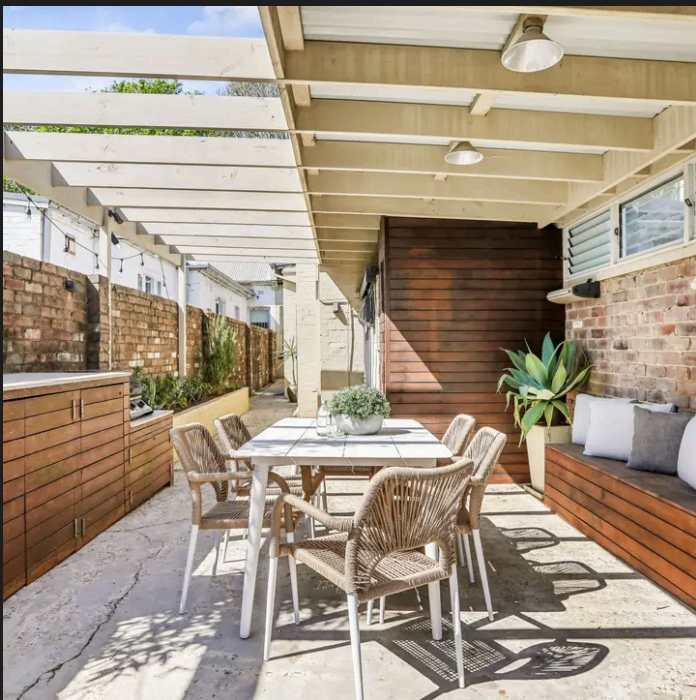
SCALE (METRES)

PLANS SHOWN ONLY INDICATIVE OF LAYOUT. DIMENSIONS ARE APPROXIMATE.  
Ref. No: 01416



150 BAPTIST STREET

REDFERN



**Charles Touma 0425 305 455**  
charles.touma@raywhite.com

**Cadan Hickey 0404 206 240**  
cadan\_hickey@raywhite.com

**Disclaimer:** All information provided is sourced from what we believe to be reliable sources. However, we do not guarantee its accuracy, and interested parties should conduct their own enquiries. Scale in metres. Indicative only. Dimensions are approximate.