

RayWhite®

TOUMA TAYLOR



**Tranquil Lifestyle Retreat in Boutique
Complex**

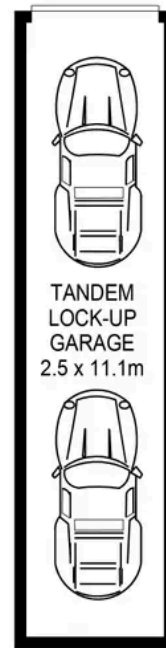
15/4-6 Cowper Street, Randwick

2 bed 1 bath 2 car

Sold



LEVEL TWO



BASEMENT



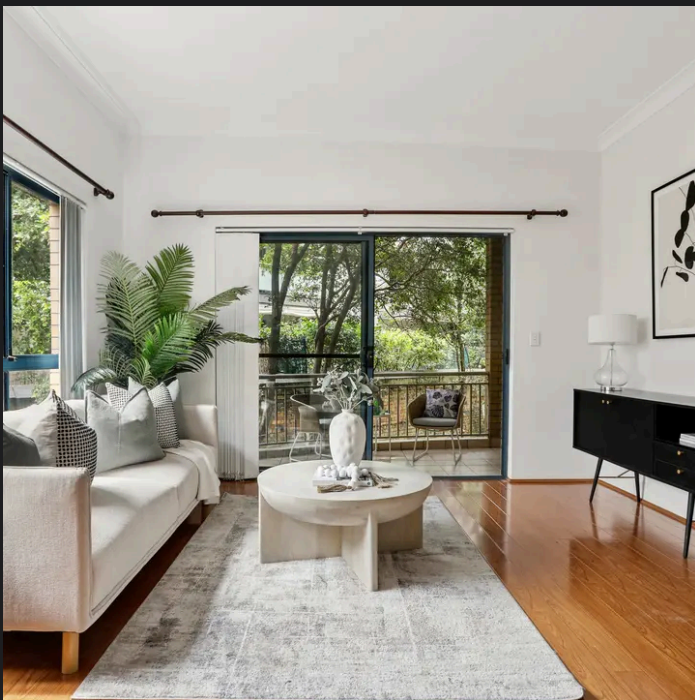
PLANS SHOWN ONLY INDICATIVE OF LAYOUT. DIMENSIONS ARE APPROXIMATE.
Ref. No: 04506

APPROX INTERNAL SIZE : 72m²
TOTAL LOT SIZE : 100m²



15/4-6 COWPER STREET

RANDWICK



Jesse Petersen 0404197940
jesse.petersen@raywhite.com

Roger Wardy 0481 355 493
roger.wardy@raywhite.com

Disclaimer: All information provided is sourced from what we believe to be reliable sources. However, we do not guarantee its accuracy, and interested parties should conduct their own enquiries. Scale in metres. Indicative only. Dimensions are approximate.