

RayWhite®

TOUMA TAYLOR

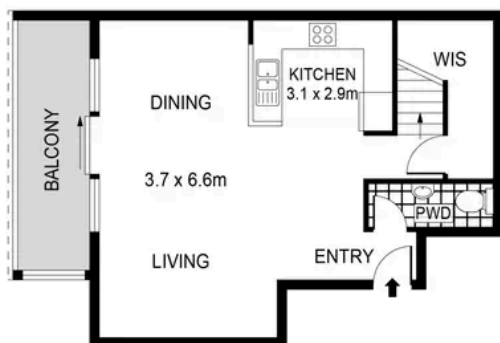


**Spacious Split-Level 'Kimberley Estate'
Apartment with Resort-Style Amenities**

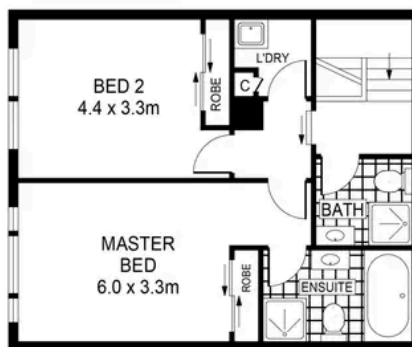
165/83-93 Dalmeny Avenue, Rosebery

2 bed 2 bath 1 car

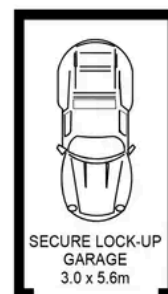
Sold



LEVEL TWO



LEVEL THREE

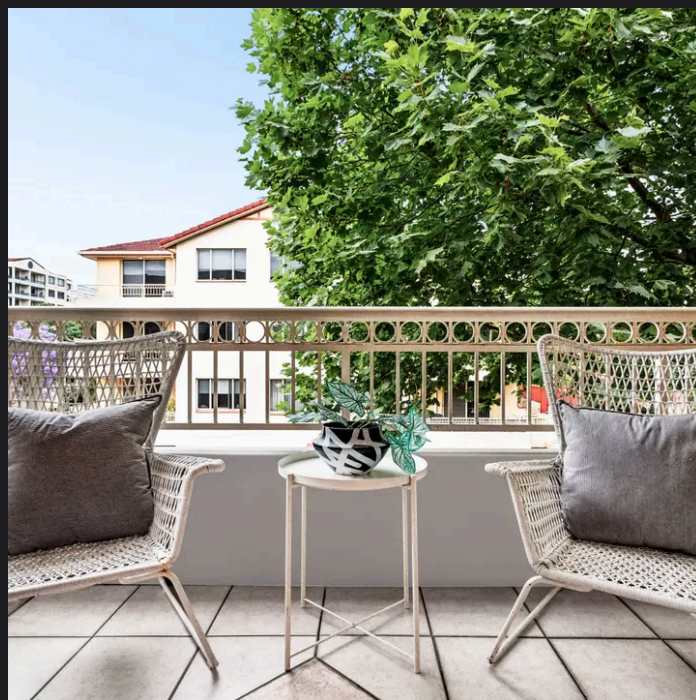


PLANS SHOWN ONLY INDICATIVE OF LAYOUT. DIMENSIONS ARE APPROXIMATE.
Ref. No. 02639



165/83-93 DALMENY AVENUE

ROSEBERY



Max Klimenko 0425 336 555
max.klimenko@raywhite.com

Dylan Corelli 0458 711 577
dylan.corelli@raywhite.com

Disclaimer: All information provided is sourced from what we believe to be reliable sources. However, we do not guarantee its accuracy, and interested parties should conduct their own enquiries. Scale in metres. Indicative only. Dimensions are approximate.