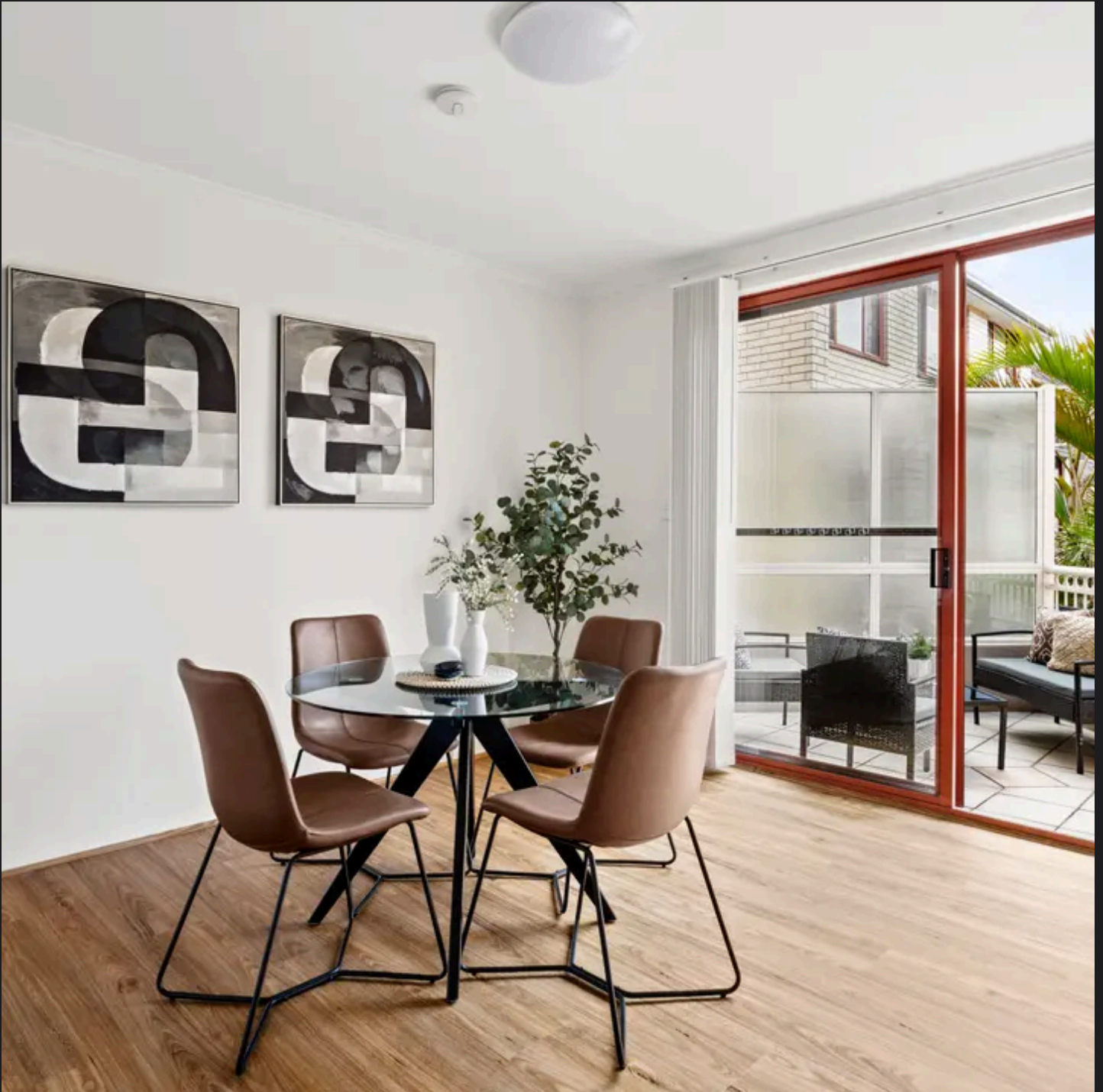


# **RayWhite®**

TOUMA TAYLOR

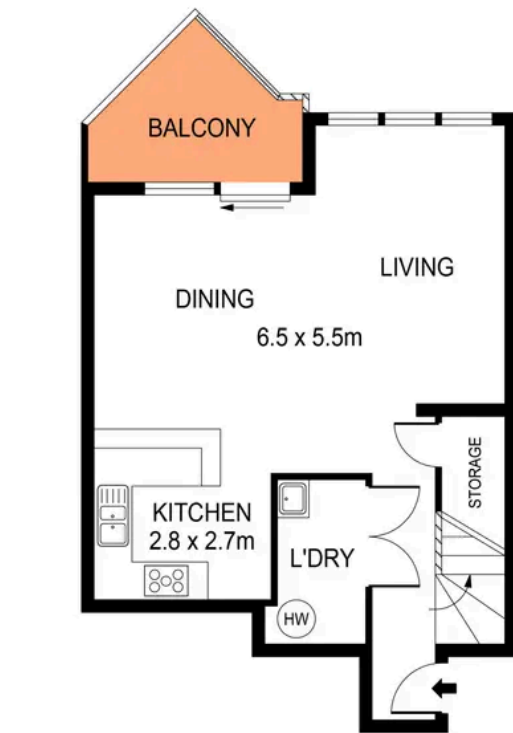


**Spacious North-Facing 'Kimberley Estate'  
Apartment**

166/83-93 Dalmeny Avenue, Rosebery

2 bed 2 bath 1 car

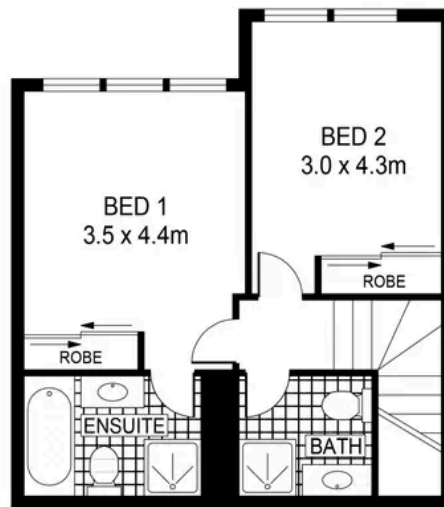
**Sold**



### LEVEL TWO

0 1 2 3 4 5 SCALE (METRES)

PLANS SHOWN ONLY INDICATIVE OF LAYOUT. DIMENSIONS ARE APPROXIMATE.  
Ref. No: 02470



### LEVEL THREE



166/83-93 DALMENY AVENUE

ROSEBERY



**Max Klimenko 0425 336 555**  
max.klimenko@raywhite.com

**Dylan Corelli 0458 711 577**  
dylan.corelli@raywhite.com

**Disclaimer:** All information provided is sourced from what we believe to be reliable sources. However, we do not guarantee its accuracy, and interested parties should conduct their own enquiries. Scale in metres. Indicative only. Dimensions are approximate.