

RayWhite®

TOUMA TAYLOR



**Freshly Updated Terrace In Sought-After
Surry Hills Enclave**

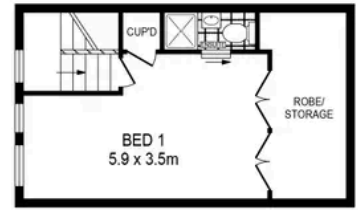
17 Ridge Street, Surry Hills

4 bed 3 bath 1 car

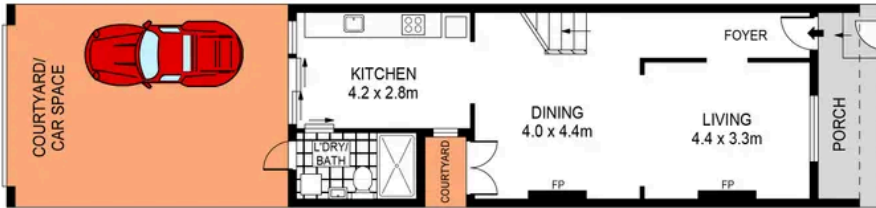
Sold



FIRST FLOOR



SECOND FLOOR



GROUND FLOOR



SCALE (METRES)

PLANS SHOWN ONLY INDICATIVE OF LAYOUT. DIMENSIONS ARE APPROXIMATE.
Ref. No: 86118



INT : 138m²

17 RIDGE STREET

SURRY HILLS



Charles Touma 0425 305 455
charles.touma@raywhite.com

Hayden Richards 0414 872 784
hayden.richards@raywhite.com

Disclaimer: All information provided is sourced from what we believe to be reliable sources. However, we do not guarantee its accuracy, and interested parties should conduct their own enquiries. Scale in metres. Indicative only. Dimensions are approximate.