

RayWhite®

TOUMA TAYLOR

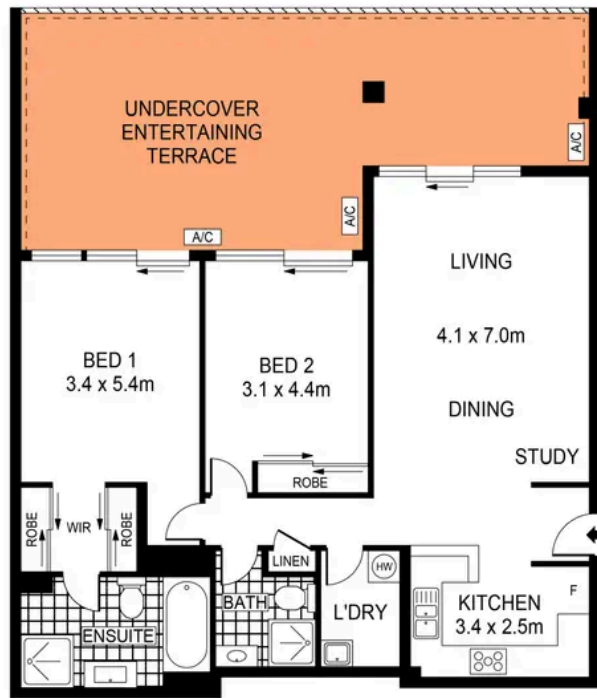


**Whisper-Quiet Apartment of Pure
Elegance with Vast Balcony**

179/83-93 Dalmeny Avenue, Rosebery

2 bed 2 bath 1 car

Sold



LEVEL ONE

0 1 2 3 4 5
SCALE (METRES)

PLANS SHOWN ONLY INDICATIVE OF LAYOUT. DIMENSIONS ARE APPROXIMATE.
Ref. No: 04650



179/83-93 DALMENY AVENUE

ROSEBERY



Max Klimenko 0425 336 555
max.klimenko@raywhite.com

Dylan Corelli 0482 970 392
dylan.corelli@raywhite.com

Disclaimer: All information provided is sourced from what we believe to be reliable sources. However, we do not guarantee its accuracy, and interested parties should conduct their own enquiries. Scale in metres. Indicative only. Dimensions are approximate.