

RayWhite®

TOUMA TAYLOR



**Refreshed city-fringe retreat in a peaceful
parkside enclave**

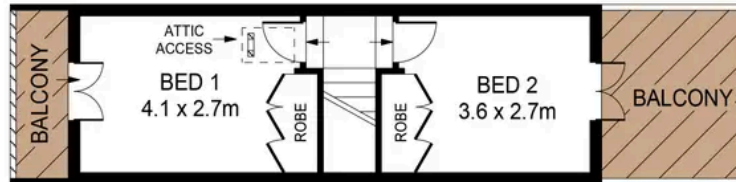
18 Edgely Street, Surry Hills

2 bed 1 bath

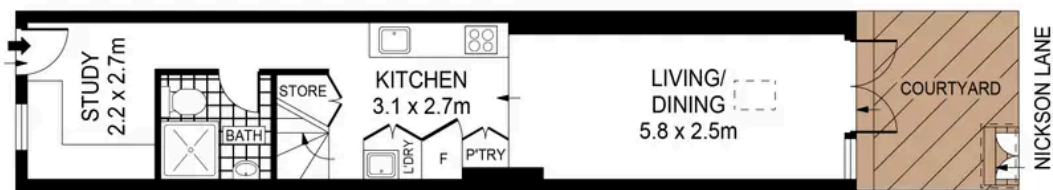
Sold



ATTIC



LEVEL TWO



LEVEL ONE

0 1 2 3 4 5 SCALE (METRES)

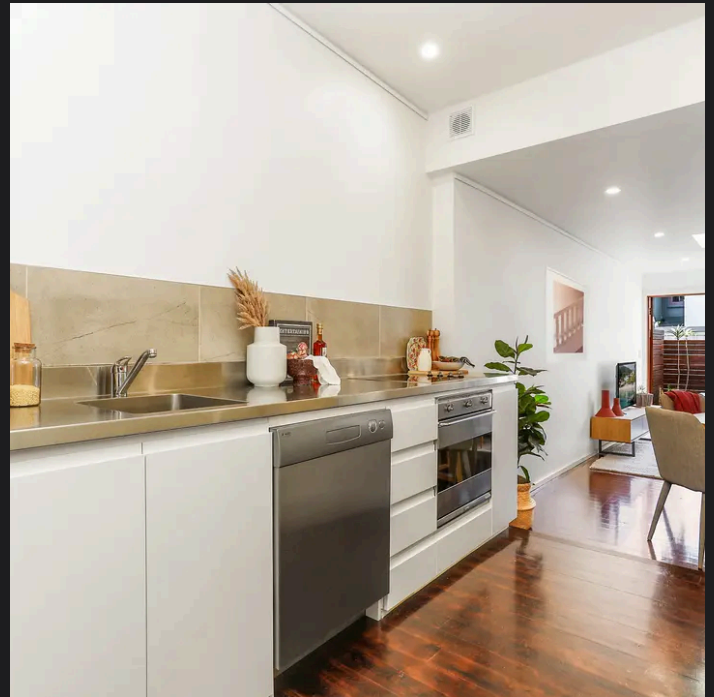
PLANS SHOWN ONLY INDICATIVE OF LAYOUT. DIMENSIONS ARE APPROXIMATE.
Ref. No: 90803

INTERNAL SQM : 97m²
LAND SIZE : 55m²



18 EDGELEY STREET

SURRY HILLS



Charles Touma 0425 305 455
charles.touma@raywhite.com

Hayden Richards 0414 872 784
hayden.richards@raywhite.com

Disclaimer: All information provided is sourced from what we believe to be reliable sources. However, we do not guarantee its accuracy, and interested parties should conduct their own enquiries. Scale in metres. Indicative only. Dimensions are approximate.