

RayWhite®

TOUMA TAYLOR

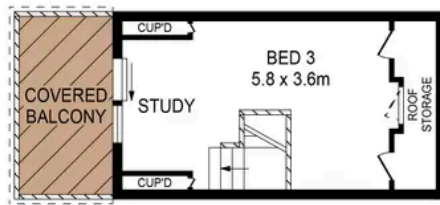


**Stylishly updated Victorian terrace in
secluded setting**

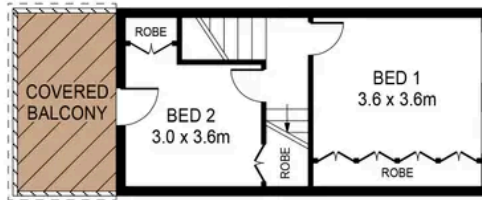
18 Little Albion Street, Surry Hills

3 bed 1 bath

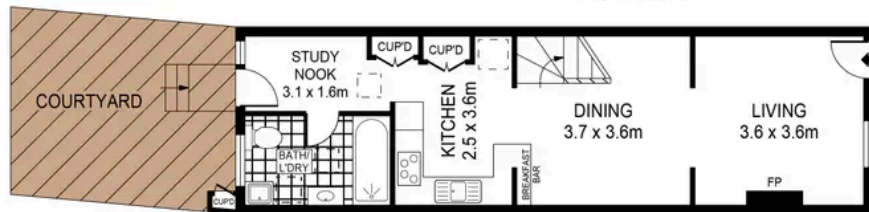
Sold



SECOND FLOOR



FIRST FLOOR



GROUND FLOOR



0 1 2 3 4 5 SCALE (METRES)

PLANS SHOWN ONLY INDICATIVE OF LAYOUT. DIMENSIONS ARE APPROXIMATE.
Ref. No: 80745

18 LITTLE ALBION STREET

SURRY HILLS



Charles Touma 0425 305 455
charles.touma@raywhite.com

Hayden Richards 0414 872 784
hayden.richards@raywhite.com

Disclaimer: All information provided is sourced from what we believe to be reliable sources. However, we do not guarantee its accuracy, and interested parties should conduct their own enquiries. Scale in metres. Indicative only. Dimensions are approximate.