

# RayWhite®

TOUMA TAYLOR

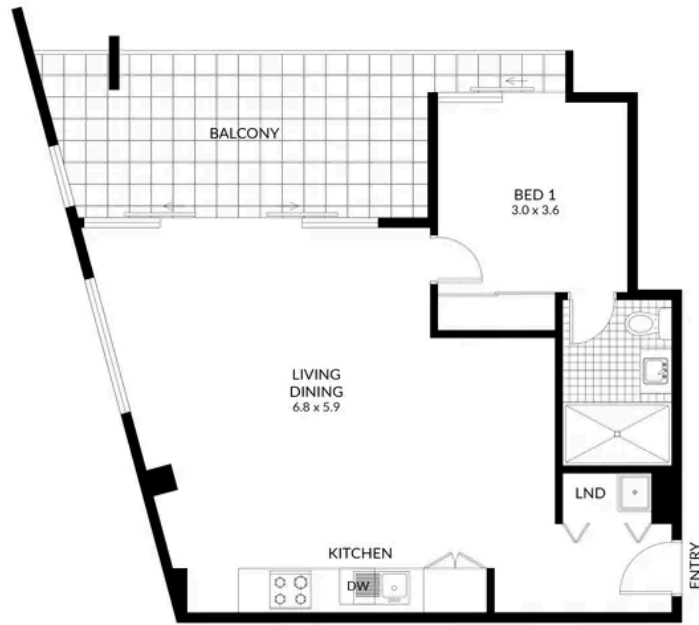


**Expanse & tranquillity in vibrant city  
precinct**

18/200-218 Goulburn Street, Surry Hills

1 bed 1 bath

**Sold**

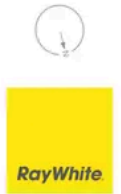


FLOOR PLAN

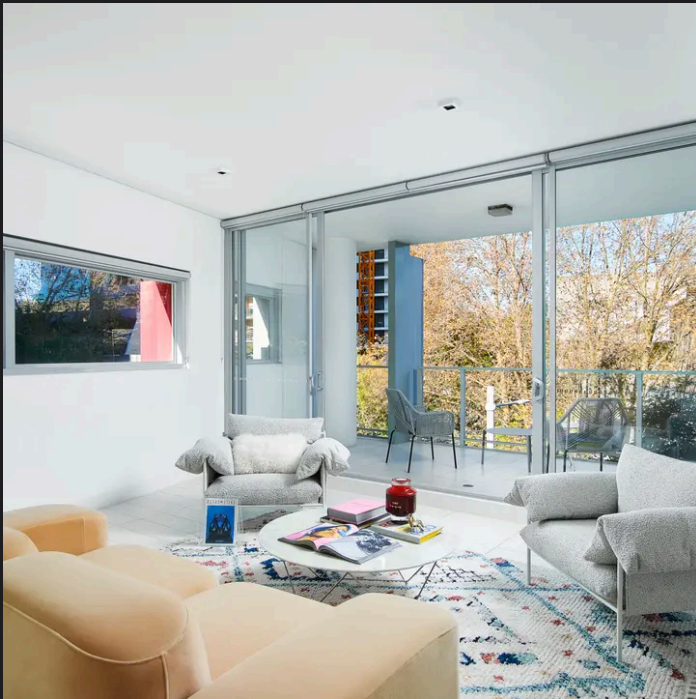
0 1 2 3 4

18/200 GOULBURN STREET,  
SURRY HILLS  
**RAY WHITE TAYLOR & PARTNERS**

1 Bedroom, 1 Bathroom



PLEASE NOTE: WHILST RAY WHITE TAKES EVERY CARE IN THE PURSUIT OF ACCURACY, THE PLAN IS SHOWN FOR GENERAL GUIDANCE. ALL AREAS, MEASUREMENTS AND DISTANCES ARE APPROXIMATE AND NOT TO SCALE. RAY WHITE AND OUR VENDOR WILL ACCEPT NO RESPONSIBILITY FOR ITS ACCURACY. INTERESTED PARTIES ARE ADVISED TO MAKE THEIR OWN INDEPENDENT ENQUIRIES.



**Disclaimer:** All information provided is sourced from what we believe to be reliable sources. However, we do not guarantee its accuracy, and interested parties should conduct their own enquiries. Scale in metres. Indicative only. Dimensions are approximate.